



FINGAL COUNTY COUNCIL

The Economic & Social Development Division
County Hall, Main Street
Swords, Fingal, Co. Dublin, Ireland

Tel: +353 (0)1 8906200 **Fax:** +353 (0)1 8906209
E-Mail: businessdev@fingalcoco.ie **Web:** www.fingalcoco.ie

dublin fingal

Ireland's Prime Investment Location



Fingal County Council
Comhairle Contae Fhine Gall



Introduction to Fingal

Fingal is Ireland's fastest growing county in both economic and population terms. Over the last decade Fingal has been Ireland's most impressive economic success story with foreign direct investment levels the highest of any county in Ireland. Increasing levels of investment in infrastructure, a rapidly expanding population, a well educated workforce and a business friendly environment ensures that the success of the last decade will continue well into the future as Fingal remains Ireland's fastest growing county.

Fingal borders Dublin and is located to the north of Ireland's capital city. Fingal occupies a total land area of 452.7 sq. km and had a population of 239,813 at the last Irish census in 2006. This was a 22% increase from the 2002 census, compared to a national increase of 8% over the same period. Fingal's growth rate between 2002 and 2006 has been unprecedented in the history of the Irish State. Fingal's population continues to grow, making it currently the third largest in population size terms of any county in Ireland, with nearly 6% of the country's population now living in Fingal. The county's population which is the youngest in Ireland also has the highest rate of labour force participation in the country.

Dublin International Airport is located in Fingal and is 8kms from Dublin City Centre and 4 kms from Swords, Fingal's administrative capital.

Fingal at a Glance

| | |
|-----------------------------|--|
| Location | North of Dublin City, adjacent to National Airport |
| Population | 239,813 (2006 Census) |
| Area | 452.7 sq. km |
| Number of Businesses | 5,500 |
| Language | English |
| Currency | Euro |



Fingal is Ireland's Prime Investment Location

Fingal is committed to business, and the county's proven track record of success continues to attract foreign direct investment and domestic investment alike. Fingal is already home to well known international companies including IBM, Astellas, Kelloggs, Hertz, Bristol-Myers Squibb and eBay.

Fingal is extremely well connected. Internationally, it connects businesses to the world through Dublin Airport. Locally, it connects businesses to the Dublin City Region via a rapidly expanding integrated transport network. Two new metro lines are to be constructed which will link the north and west of Fingal to Dublin Airport and Dublin City – home to 1.2 million consumers. Businesses also benefit from well-developed road infrastructure and close proximity to two sea ports in Dublin and Dun Laoghaire.

Fingal has all the requirements for business success with low operating costs, low rents, low commercial rates and Ireland's corporation tax rate of 12.5%, the lowest rate in Europe. Apart from the attractive tax and costs structure, businesses in Fingal also benefit from a world-class telecommunications network.

The county has very advanced industrial infrastructure, with a wide range of prime industrial and commercial development land options available to businesses, catering for all types of investment levels.

Fingal is proud of its people with the county having a young, highly educated, well trained, internationally mobile and motivated workforce. The county benefits from Ireland's education system, recognised as one of the best in the world.

Fingal is alive with culture and heritage, making it a wonderful place to live. Attracting people to live in the county has never been difficult with options for residents to enjoy superior affordable coastal, urban and rural lifestyles.



“Our decision to locate our new corporate headquarters in Ballycoolin, Fingal, is reflective of the area’s emergence as a key corporate and industrial location, proximity to the M50, major routes and the airport”

Geraldine O'Connor, Corporate Affairs Manager, Wyeth Ireland



Connecting your Business to the World

Dublin International Airport is located in Fingal and is one of Europe’s 10 largest airports for international traffic.

Over 21.4 million passengers used the Airport during 2007, which is more than four times the population of the Irish State.

The Airport welcomes an average of 60,000 passengers through its facilities every day, rising to 80,000 during the peak season, and more than 600 aircrafts movements every day.

With more than 150 destinations served by 44 scheduled airlines, Dublin Airport accounts for 75% of all air traffic into the Republic of Ireland.

The Airport had over 197,000 aircraft movements during 2006.

Among Dublin Airport’s most popular international destinations are London, Paris, New York, Frankfurt and Amsterdam.

Dublin International Airport is Fingal’s single largest economic entity, directly supporting 14,000 jobs in the Airport campus and also supporting more than 50,000 jobs nationally.

Over €2bn is being invested in new facilities at Dublin Airport over the next decade to radically improve the passenger experience. More than €1bn will be spent by 2009.

T2, the Airport’s newest Terminal will be operational by 2010 and a new runway to cater for future growth is also on the way.

Passenger numbers at Dublin Airport are expected to grow to 30 million by 2015.



Left: An artist’s impression of the T2, the new terminal at Dublin International Airport.



Connecting your Business to Dublin City

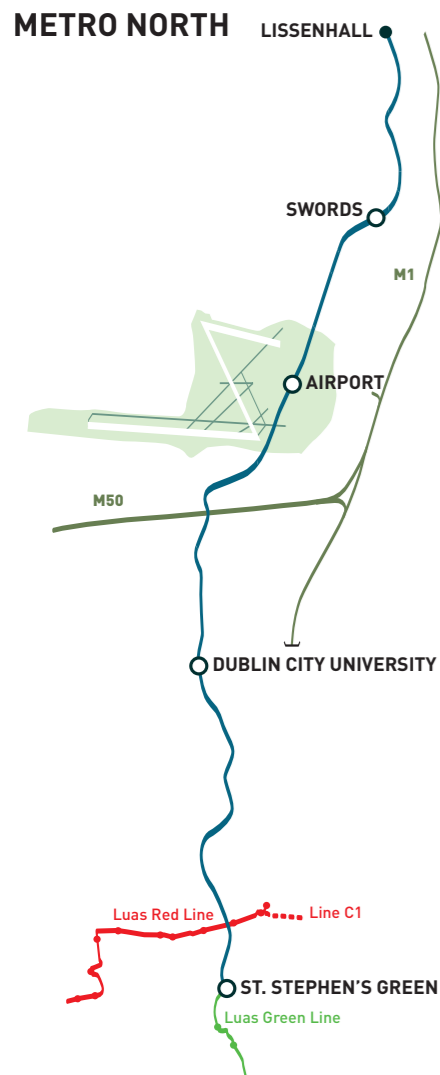
Many businesses need a mobile workforce and Ireland benefits from a first-class transport system – and it's going to get even better. To meet the constant growth in transport demand, the Irish Government's Transport 21 capital investment programme is upgrading the transport system. Fingal is one of Ireland's largest beneficiaries of this scheme, thanks to the planned construction of two new metro lines, Metro North and Metro West. The metro is a significant step in the creation of a world-class integrated mass-transit transport system for Dublin. The new metro lines promise to provide a modern, attractive and highly accessible system, similar to those in other European cities of a similar size.

Integration is the key benefit for Fingal. The first metro phase will link all the existing rail corridors in Dublin, by interchanging with the Dublin Area Rapid Transport (DART train) system, the northern, north-western and south-eastern suburban rail lines, and the Luas Red and Green tram lines, as well as bus services along the route.

Metro North will service Fingal using underground, surface and elevated tracks. It will operate from St Stephen's Green in Dublin city centre, and run through Dublin Airport to north of Swords, Fingal's administrative capital. The line, to be completed by 2013, will have 15 stops and provide an environmentally friendly alternative to car-use. An estimated 34 million passengers will travel on Metro North each year, with trains running every four minutes. It is planned that they will run every 90 seconds as demand builds. The journey time from St Stephen's Green to Dublin Airport will be less than 20 minutes, with an additional nine minutes to Swords.

The DART (Dublin Area Rapid Transport) passenger rail line has already benefited from major improvements. By linking the east of Fingal to Dublin city, it ensures that Fingal is placed at the centre of an improved world-class integrated transport system in the Dublin region.

The imagination and drive that has led to Metro North will also ensure the development of the Metro North Economic Corridor, which includes Fingal. This corridor is set to become a major international centre for economic development and investment, with the development of new international commercial and service facilities.

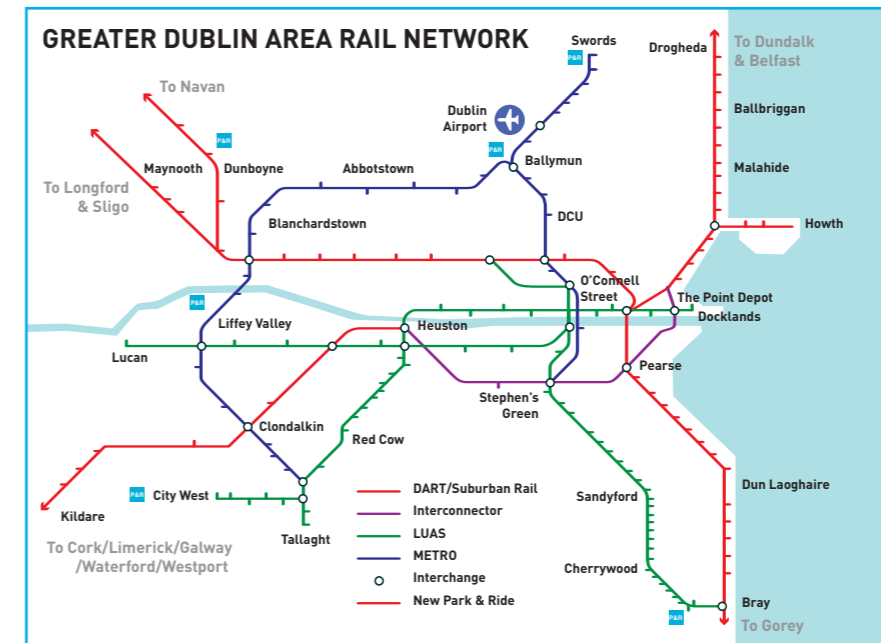


Connecting your Business to the Greater Dublin Area

The Metro West line is a key component of the Transport 21 framework, creating the network that will orbit the greater Dublin area. By 2014, it will connect the highly industrialised Blanchardstown area in west Fingal to Dublin city.

Metro West will also link the towns of Tallaght, Clondalkin and Porterstown, providing a fast commuter service to the city centre and Dublin Airport via Metro North. Some 20 million passengers will use Metro West every year.

Metro West will greatly enhance the connectivity of the whole rail-based public transport network, interchanging with the Luas Red line, the Kildare and Maynooth suburban rail lines, Metro North and the new Luas tramlines to Citywest and Lucan.





Connecting your Products to your International Customers

As a coastal location, Fingal is close to two of Ireland's largest ports – Dun Laoghaire and Dublin – giving it ready access to an EU market of 537 million people. A highly efficient distribution network means that most of Europe is just 24 to 48 hours away by road.

Dublin Port is the largest and busiest sea port on the island of Ireland and is less than 12 km from Fingal. Drivers can access the port with ease thanks to the recently opened Dublin Port Tunnel, which provides rapid access from Fingal to the port. Approximately two-thirds of Ireland's port traffic travels via Dublin Port.

Although the main activity of Dublin Port is worldwide freight handling, the port also offers shipping services for passengers and cruise liners, including regular "roll-on roll-off" ferry services to Wales and England. The largest car ferry in the world, Irish Ferries' Ulysses, travels between Dublin and Holyhead in Wales.

Dublin Port offers a wide choice of travel options from four ferry companies providing cruise and high-speed trips. There are 18 sailings daily between Ireland and the UK.

Another of Ireland's busiest ports, Dun Laoghaire, is located to the south of Dublin City and is easily accessible to Fingal via the Dublin Port Tunnel. Dun Laoghaire Port's main business is the provision of ferry terminal facilities and marine leisure.

Fingal will soon have its own port. Detailed plans are in place to build a new deep-water port at Bremore in the north of Fingal, which will create further access to international markets and create new development opportunities.



Connecting your Business to your Local Customers

Fingal's location – on the edge of Dublin city – allows easy access to:

- 1.2 million consumers
- A highly educated work-force
- First-class business services
- Suppliers

A well developed road and rail system in the Dublin City Region enables fast connections from Fingal to all major local, regional and national routes.

The M1 Motorway passes through Fingal and is Ireland's Main North-South Transport Corridor Route which links Dublin to Belfast, the island's second largest city.

Driving from Fingal to Belfast takes around 90 minutes; travel times will improve as further improvements are made north of the border.

The M50 motorway, which is Dublin's main orbital route and passes through Fingal, is currently going through a series of upgrades. Detailed plans are in place for the construction of a new Outer Orbital Route, part of which will also pass through Fingal.

Road and rail services in the Greater Dublin Area are constantly being upgraded and integrated to ensure a better service for commuters.

All residential and industrial areas in Fingal are served by regular services from Dublin Bus, Dublin's main bus service provider.



“Since locating to Fingal, our business has gone from strength to strength. Locating to Fingal has assisted us in taking our business model and expansion plans to the next level”

Colm Piercy, Managing Director, Digiweb



Fingal – The Land of Opportunity

An advantage that Fingal has over other locations is the availability of a vast land-bank for industrial and commercial development.

The last 15 years has seen unprecedented development of industrial and commercial property infrastructure in Fingal. Over the last 5 years in particular, the building of new industrial, science and technology parks has been accelerating.

A wide range of property solutions and options are available in Fingal to meet investors requirements, from large scale fully-serviced industrial sites comprising of hundreds of acres to much smaller sites of 0.5 acres.

There are also options to build custom designed facilities on green field sites.

Fingal is already home to such well known blue chip companies as IBM, Astellas, Kelloggs, Hertz, Bristol-Myers Squibb and eBay. Many of these companies are located in some of Fingal's newer industrial parks.

There are numerous modern enterprise centres in Fingal providing workspace for smaller businesses.

With industrial and commercial rates the lowest in the Dublin City Region, and office rents lower than comparable international locations, Fingal continues to attract international businesses from all over the world.

Fingal has a large choice of existing industrial and commercial properties available to rent, lease or buy.





The Conditions for Success

Businesses located in Fingal benefit from Ireland's highly competitive corporation tax rate of 12.5%. They also enjoy:

- Double taxation agreements with 44 of Ireland's main trading nations
- Taxation credits available for incremental expenditure on R&D
- A Government committed to low taxation
- A favourable holding company regime
- Low social security contributions for employees
- Business friendly legislation and regulations.

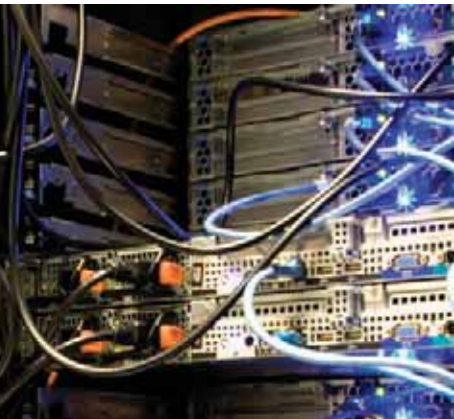


The Technology for Success

Ireland is at the cutting edge of technological advancements and has one of the most modern and competitive telecommunication infrastructures in Europe. Thanks to its superb strategic location, Fingal has gained significantly from these improvements.

The telecommunications market in Ireland is fully de-regulated and numerous companies have entered the market, creating competition and choice.

Major investments have resulted in state-of-the-art optical networks with world-class national and international connectivity.



Supporting Business Success

Fingal has a business friendly environment where the national and local business development agencies work together to provide a full range of services and supports that new businesses to the area might need, whether they be start-up situations or major foreign direct investment projects.

Among the services and supports available include:

- Identifying suitable property solutions
- Identifying suitable planning solutions
- Introductions to local industry, utility providers, professional service providers and recruitment companies
- Providing information on business opportunities in Fingal and the wider Irish economy to support decision making
- Sourcing companies for possible joint venture agreements and technology licensing arrangements
- Advising on funding options
- Providing access to Mentoring, Training and Staff Development programmes
- Providing local and international networking opportunities and solutions
- For start-up companies there are added services available through numerous incubator and enterprise space providers.





The People for Success

Ireland has the youngest population in Europe with Fingal having the youngest population in Ireland.

The workforce in Fingal is also the youngest in Ireland with an average age of 30.5 years compared to the national average of 35 years.

Fingal has the highest levels of worker participation in Ireland, a product of the youthfulness of the workforce.

Sustained strong growth in labour supply will maintain a capacity for growth in Fingal. The demographics of the county will ensure this.

In Fingal there is a ready availability of an educated and professionally skilled workforce. Educational attainment in Fingal is among the highest in Ireland.

The flexible 'can-do' attitude of Irish workers has been recognised throughout the world as a great advantage in business.

The Fingal workforce is particularly mobile, internationally focussed and highly motivated.

Fingal has a stable industrial relations environment. Surveys carried out in Fingal have shown a willingness by Fingal workers to access training and upskilling opportunities, while employers have reported that staff recruitment and retention are not problem areas.

The quality of the workforce is one of the main factors for Fingal's continued success in attracting major international companies to the county.



Learning for Success

The education system in Ireland is one of the best in the world according to the 2007 independent IMD World Competitiveness Report with almost 1 million people in full time education.

Within one hour's drive Fingal has access to 5 Universities, 4 Institutes of Technology and the National College of Ireland which between them cater for over 90,000 students, both full and part-time.

Dublin City University is on the edge of Fingal and will be linked to both North and West Fingal with the arrival of Metro North.

The Institute of Technology Blanchardstown is located in the west of Fingal.

Business, Engineering and Computing are the most popular qualification areas.

The education providers in Fingal and surrounding areas have long established links with industry, and work in co-operation with businesses to ensure that their skills, knowledge and research and development needs are met.

Nearly one third of Fingal's population aged 15 years or over have a third-level qualification.



*“The quality of life in Fingal is second to none.
It is a great place to work, live and raise a family”*

Mark McCarville, Managing Director, M2M Telematics



Coastal Living

The towns and villages of Fingal are famous for their excellent accommodation, fine restaurants, friendly pubs and lively entertainment. Fingal's close association with the sea makes the county one of Ireland's premier seafood locations. Fingal is the home of beautiful beaches, modern marinas, unique peninsulas and coastal tracks. There is a multitude of water sport activities as well as a wealth of sea angling and fresh water angling also available in the county. Coastal living in Fingal is real living.



Urban Living

Blanchardstown in the West of Fingal is the county's largest urban area with over 80,000 people. It is also the county's prime retail centre and is home to the Blanchardstown Shopping Centre and Retail Park which is located on a 100 acre site and is the largest in Ireland. The Blanchardstown Centre offers over 150 retail outlets, a 9 screen cinema, a 24 hour leisureplex, retail park and 5,000 free car parking spaces. The Centre was recently voted the best 'Established Retail Centre in the United Kingdom and Ireland' at the British Council of Shopping Centre (BCSC) Awards. Swords, the county's administrative capital is located in the North of Fingal close to Dublin Airport, and has a population of over 40,000 people. The Pavilions Shopping Centre in Swords has established itself as the prime retail centre in North Dublin with a large choice of retail outlets and the recent addition of cinema facilities. Fingal has many smaller urban centres predominantly on the east coast with populations ranging from 4,000-15,000 among them Balbriggan, Malahide, Portmarnock, Skerries, Donabate, Howth and Sutton.



Rural Living

Fingal offers the benefits of living in the countryside with all the modern conveniences of urban living on your doorstep. Rural Fingal is home to sleepy villages, beautiful countryside, equestrian centres, walking and cycling routes. Rural Fingal also boasts some of the finest Great Houses, Gardens and historical sites in Ireland, among them Ardgillan Castle & Demesne, Malahide Castle & Demesne and Newbridge House and Demesne. Fingal is home to 28 top quality golf courses making it the most golf populated area in Ireland. Fingal offers the golfer everything from superb parkland to excellent links courses.



Left: Ardgillan Castle and Demesne.



Homes, Health and Happiness

Fingal can meet every need at very high standards. Quality homes are available in great locations at affordable prices, while health needs are met by 26 acute hospitals and two district hospitals in the Dublin City Region. Integrated primary health care facilities are also available throughout Fingal.

Families also enjoy high quality community facilities, sports clubs, parks and playgrounds.



Alive with Culture and Heritage

Fingal is steeped in culture and a vast array of events are run throughout the year, including: craft and country fairs, art and photographic exhibitions, historical lectures and heritage festivals, ballet performances and musical recitals, bird watching and horticultural shows, family fun days and farmers markets, regattas and international walking festivals.

The Draocht Centre in Blanchardstown has a 400 seat theatre and one of the largest performance stages in Ireland. This popular arts centre caters for all aspects of local, national and international artistic activity – from drama, musicals and dance to exhibitions, concerts and kids' events.

The Seamus Ennis Cultural Centre, in the North of Fingal, is the main focal point for traditional Irish music in the county.



Fingal – A Great Place to Live

Fingal is known throughout Ireland and beyond for the exceptional quality of life enjoyed by its residents. This is even more significant since Ireland was awarded first place in the Economist Worldwide Quality of Life 2005 Index.

Fingal offers all of the charm of the countryside with the convenience of a modern vibrant city nearby – and the coast on your doorstep.

Further Information

For further information on Fingal – Ireland's Prime Investment Location, please contact:

The Senior Executive Officer
Economic & Social Development Division
Fingal County Council
County Hall, Main Street, Swords
Fingal, Co. Dublin, Ireland

Tel: +353 (0)1 890 6200
Fax: +353 (0)1 890 6209
Email: businessdev@fingalcoco.ie
Web: www.fingalcoco.ie

Acknowledgments

Fingal County Council would like to thank the following for their co-operation in this publication:

IDA Ireland, Dublin Airport Authority, Aer Lingus, Transport 21, Enterprise Ireland, Central Statistics Office, Dublin Port Company, Dun Laoghaire Harbour Company, P&O Ferries, Drogheda Port Company, National Roads Authority, Railway Procurement Agency, Dublin Port Tunnel, Dublin Bus, Iarnrod Eireann, Irish Ferries, DART, Institute of Technology Blanchardstown, Blanchardstown Centre, Pavilions Shopping Centre, Dublin City University, Digiweb, Fingal County Enterprise Board, Fingal Tourism, Fingal Dublin Chamber of Commerce, Fingal Skills Observatory, IBM, Astellas, Bristol-Myers Squibb, Hertz, Kelloggs, Wyeth Ireland, M2M Telematics, Blanchardstown Chamber of Commerce, Beat Enterprise Centre, Base Enterprise Centre, Balbriggan Chamber of Commerce, Fingal Development Board, FÁS, Luttrellstown Golf & Country Club, Ardgillan Castle & Demesne, Health Service Executive, Draocht, Sporting Fingal FC, FCC Photo Group, Ellney Ltd.