

Proposed Material Alterations to the Draft Fingal Development Plan 2017 - 2023

COUNTY STRATEGY / INDEX

Sheet No.1

Zoning Objectives

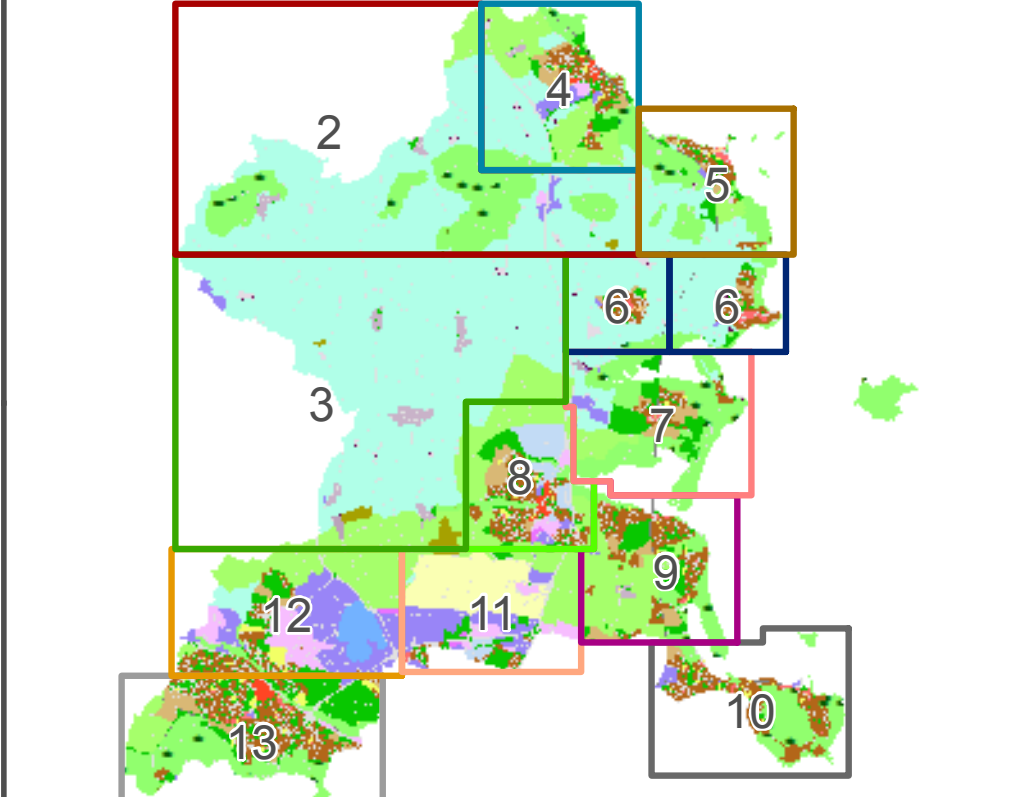
CI - Community Infrastructure	Provide for and protect civic, religious, community, education, health care and social infrastructure
DA - Dublin Airport	Ensure the efficient and effective operation and development of the airport in accordance with an approved Local Area Plan
FP - Food Park	Provide for and facilitate the development of a Food Industry Park
GB - Greenbelt	Protect and provide for a Greenbelt
GE - General Employment	Provide opportunities for general enterprise and employment
HA - High Amenity	Protect and enhance high amenity areas
HI - Heavy Industry	Provide for heavy industry
HT - High Technology	Provide for office, research and development and high technology/high technology manufacturing type employment in a high quality built and landscaped environment
LC - Local Centre	Protect, provide for and/or improve local centre facilities
MC - Major Town Centre	Protect, provide for and/or improve major town centre facilities
ME - Metro Economic Corridor	Facilitate opportunities for high density mixed use employment generating activity and commercial development, and support the provision of an appropriate quantum of residential development within the Metro Economic Corridor
OS - Open Space	Preserve and provide for open space and recreational amenities
RA - Residential Area	Provide for new residential communities subject to the provision of the necessary social and physical infrastructure
RB - Rural Business	Provide for and facilitate rural-related business which has a demonstrated need for a rural location
RC - Rural Cluster	Provide for small scale infill development serving local needs while maintaining the rural nature of the cluster
RS - Residential	Provide for residential development and protect and improve residential amenity
RU - Rural	Protect and promote in a balanced way, the development of agriculture and rural-related enterprise, biodiversity, the rural landscape, and the built and cultural heritage
RV - Rural Village	Protect and promote the character of the Rural Village and promote a vibrant community in accordance with an approved Local Area Plan, and the availability of physical and community infrastructure
RW - Retail Warehousing	Provide for retail warehousing development
TC - Town and District Centre	Protect and enhance the special physical and social character of town and district centres and provide and/or improve urban facilities
WD - Warehousing and Distribution	Provide for distribution, warehouse, storage and logistics facilities which require good access to a major road network within a good quality environment

Specific Objectives

	Development Boundary
	Airport Red Approach Area
	Inner Airport Noise Zone
	Inner Public Safety Zone
	Outer Airport Noise Zone
	Outer Public Safety Zone
	County Boundary
	Protected Structure

Note :  
This Map is an Index/Strategy Sheet to the Development Plan.  
For further detail please refer to the Draft Written Statement, Draft Written Statement Appendices and the Green Infrastructure Maps  
To view details of Recorded Monuments and Places see [www.archaeology.ie/publications/forms-legislation/record-of-monuments-and-places](http://www.archaeology.ie/publications/forms-legislation/record-of-monuments-and-places)

Sheet Index Map



Fingal Development Plan 2017-2023

Be part of it.

