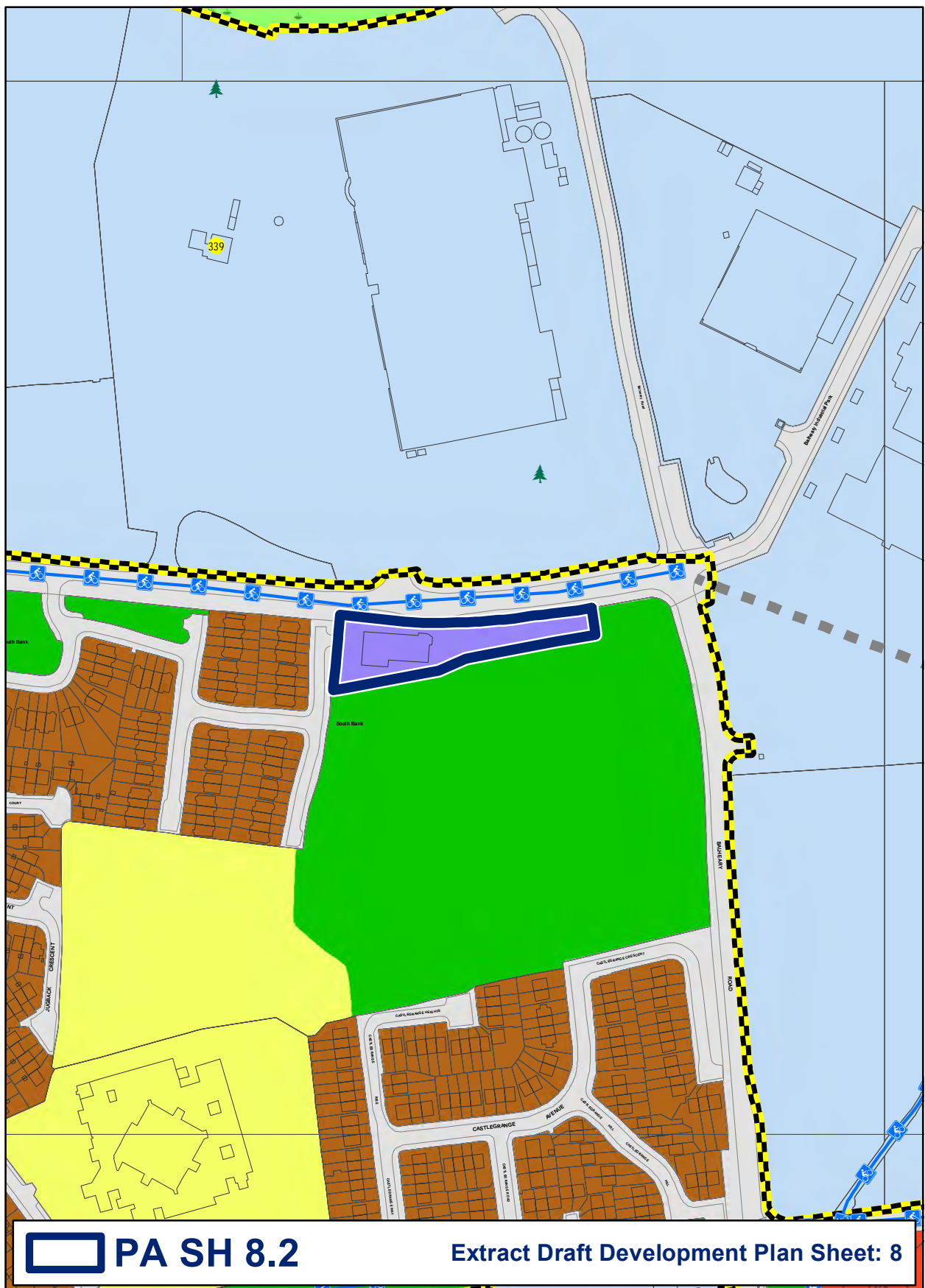
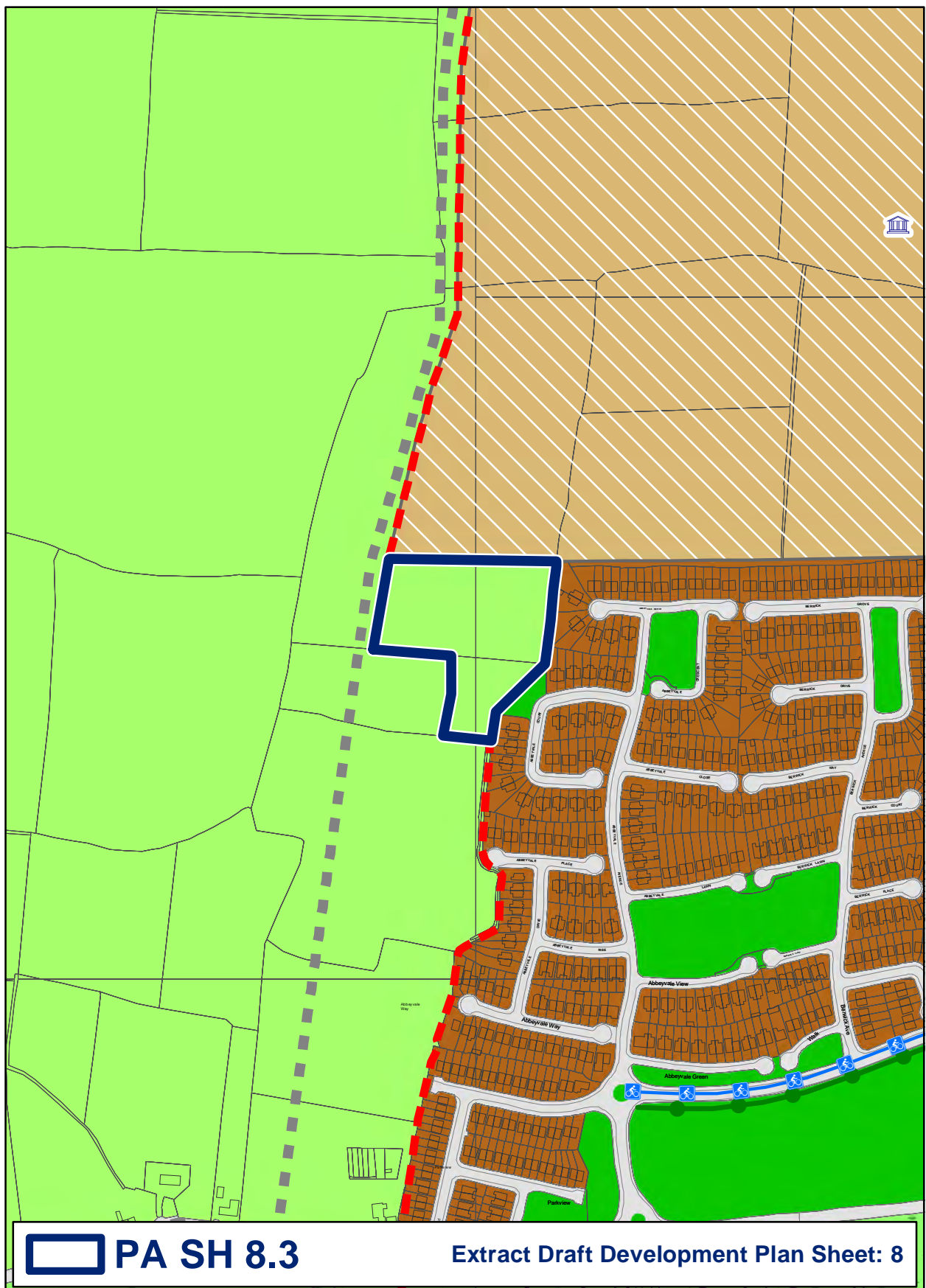
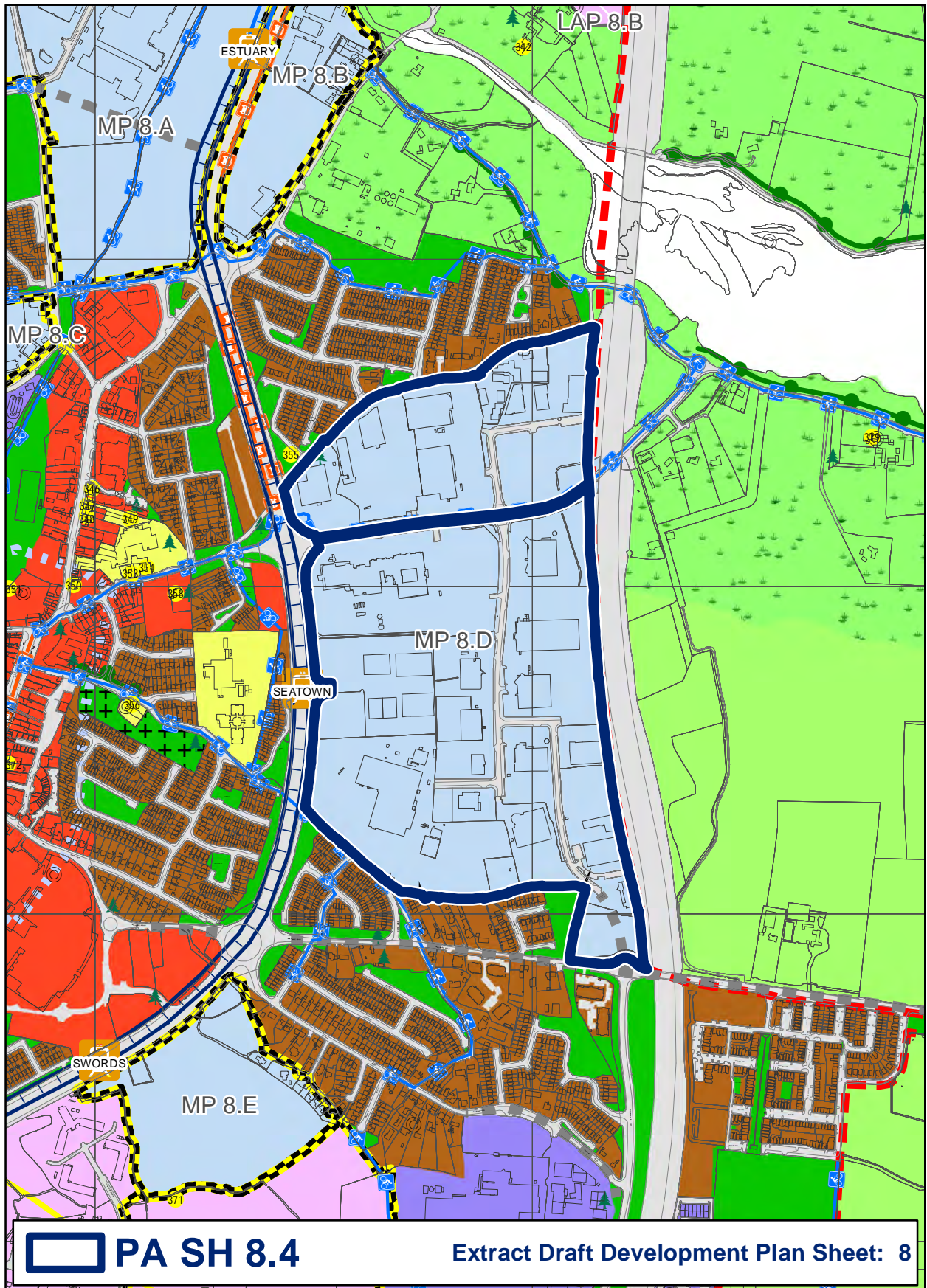


Create two new Masterplan areas at Estuary, known as Estuary Central and Estuary West

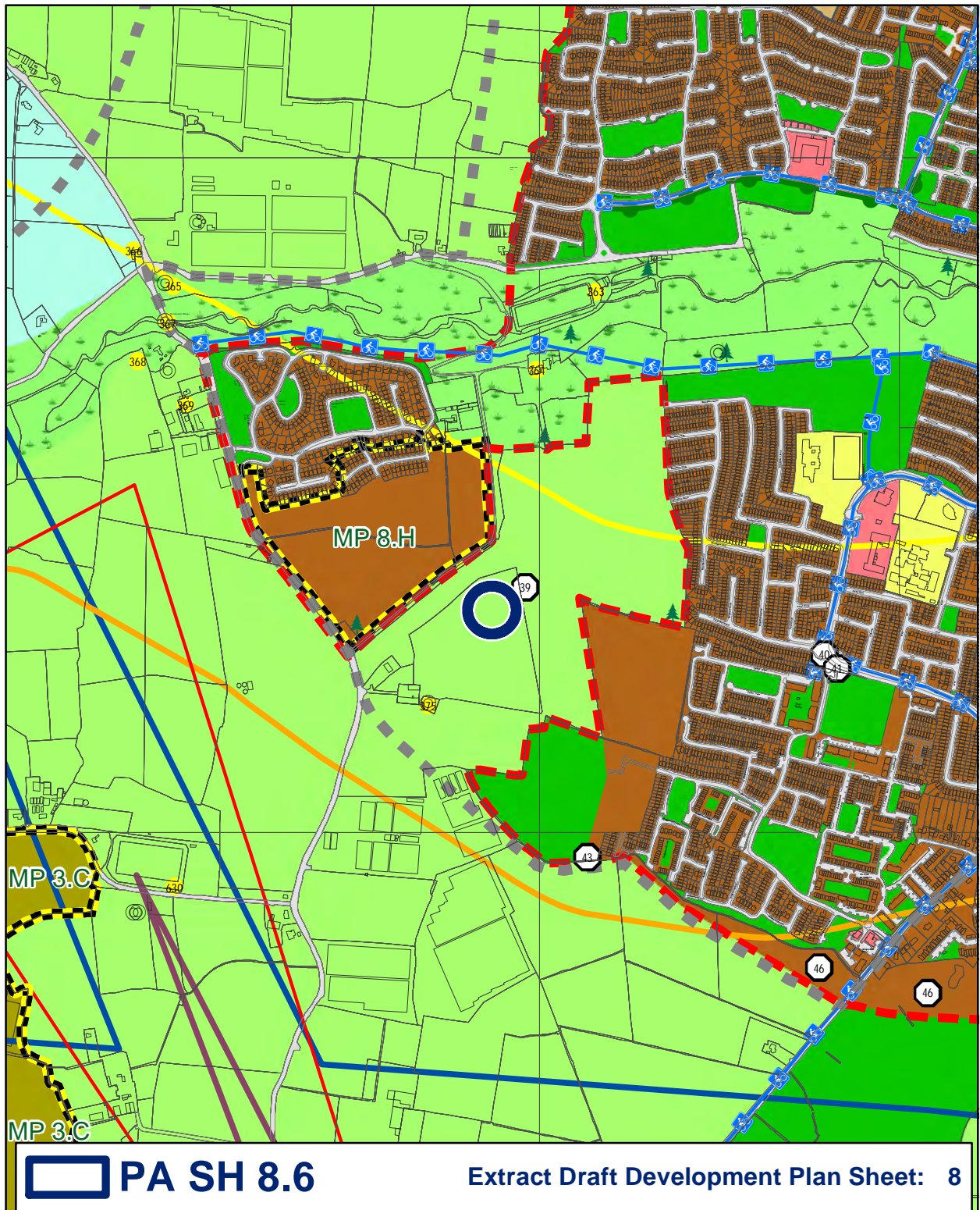


Amend zoning from GE – General Employment to CI – Community Infrastructure at St. Colmcille's GAA club

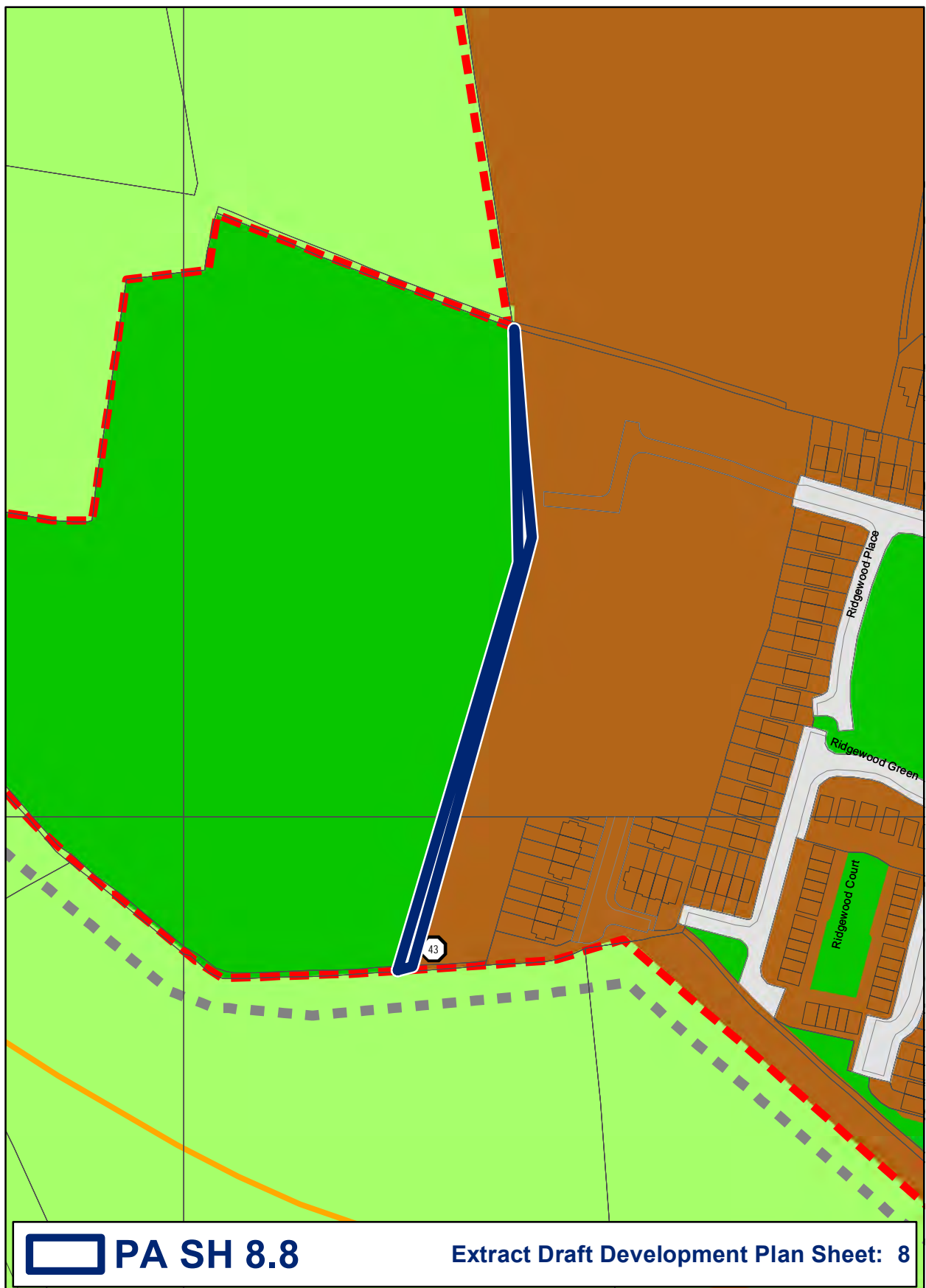


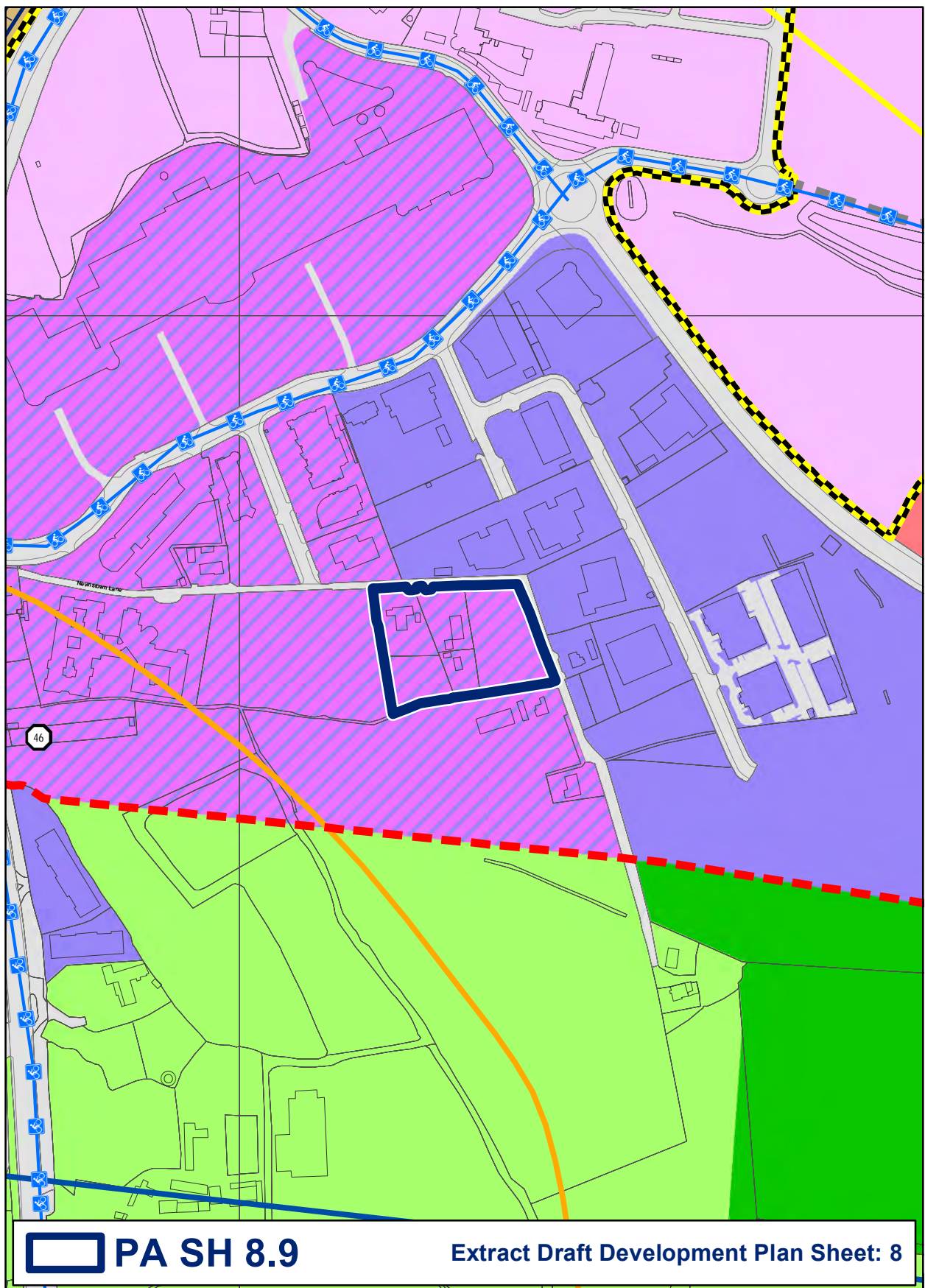


Create two new Masterplan areas at Seatown, known as Seatown North and Seatown South



Insert new mapped Local Objective at Knocksedan: Carry out, within 2 years of the adoption of this Development Plan, a feasibility study, of lands at Knocksedan to include a full investigation of requirements in terms of infrastructure, traffic, water, access, drainage and community facilities to inform the future designation of these lands for development

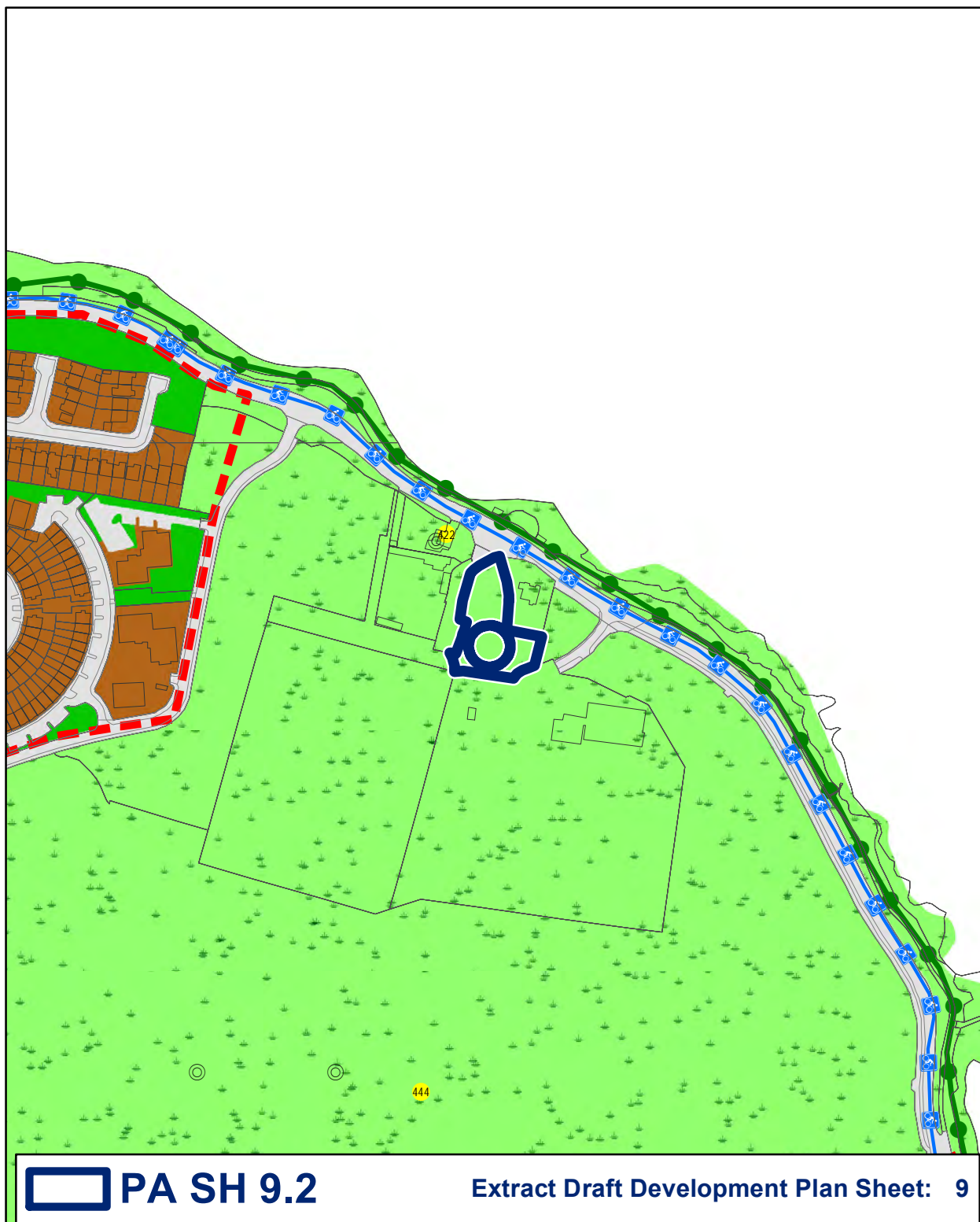




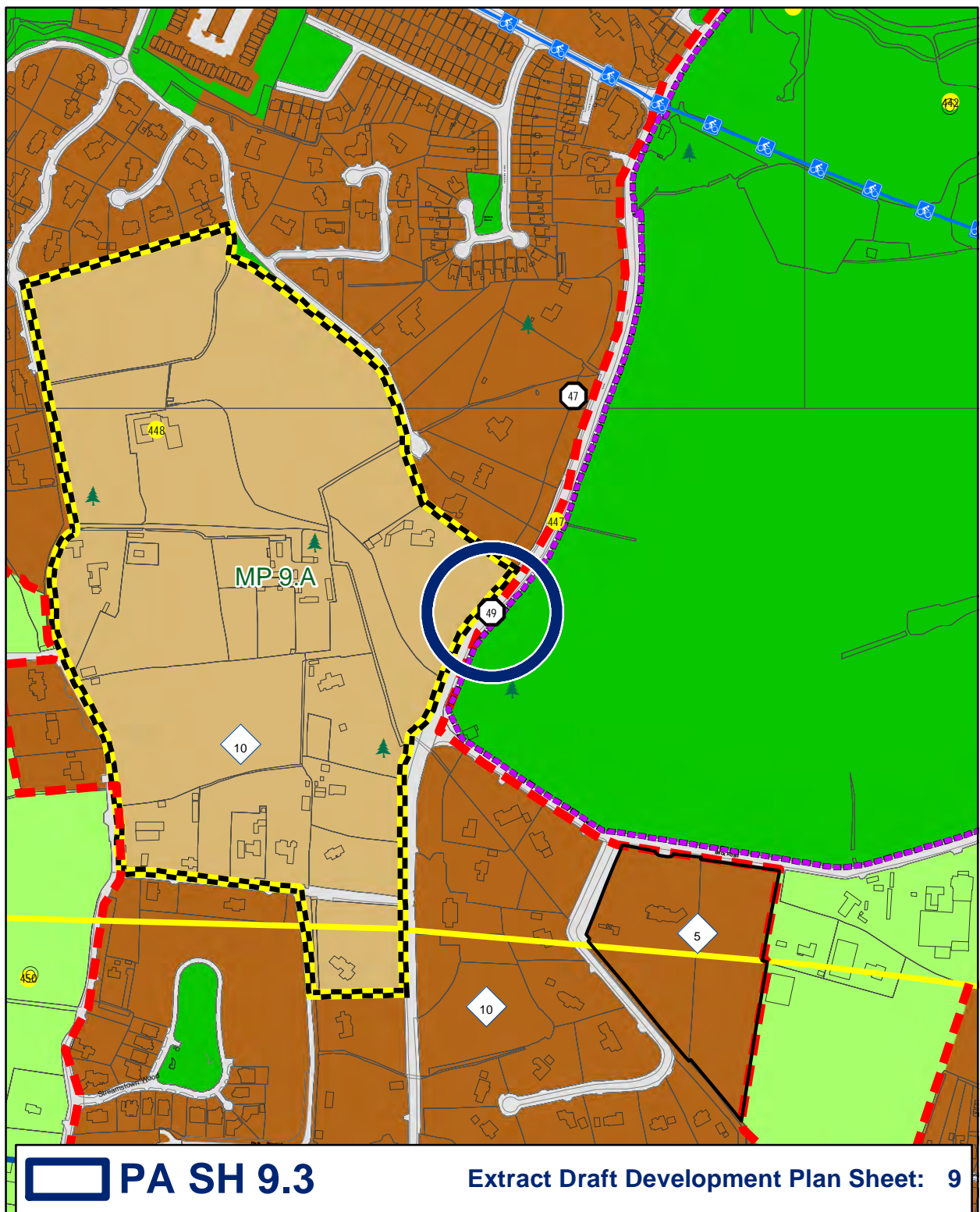
Amend zoning from RW - Retail Warehousing to GE- General Employment at Nevinstown



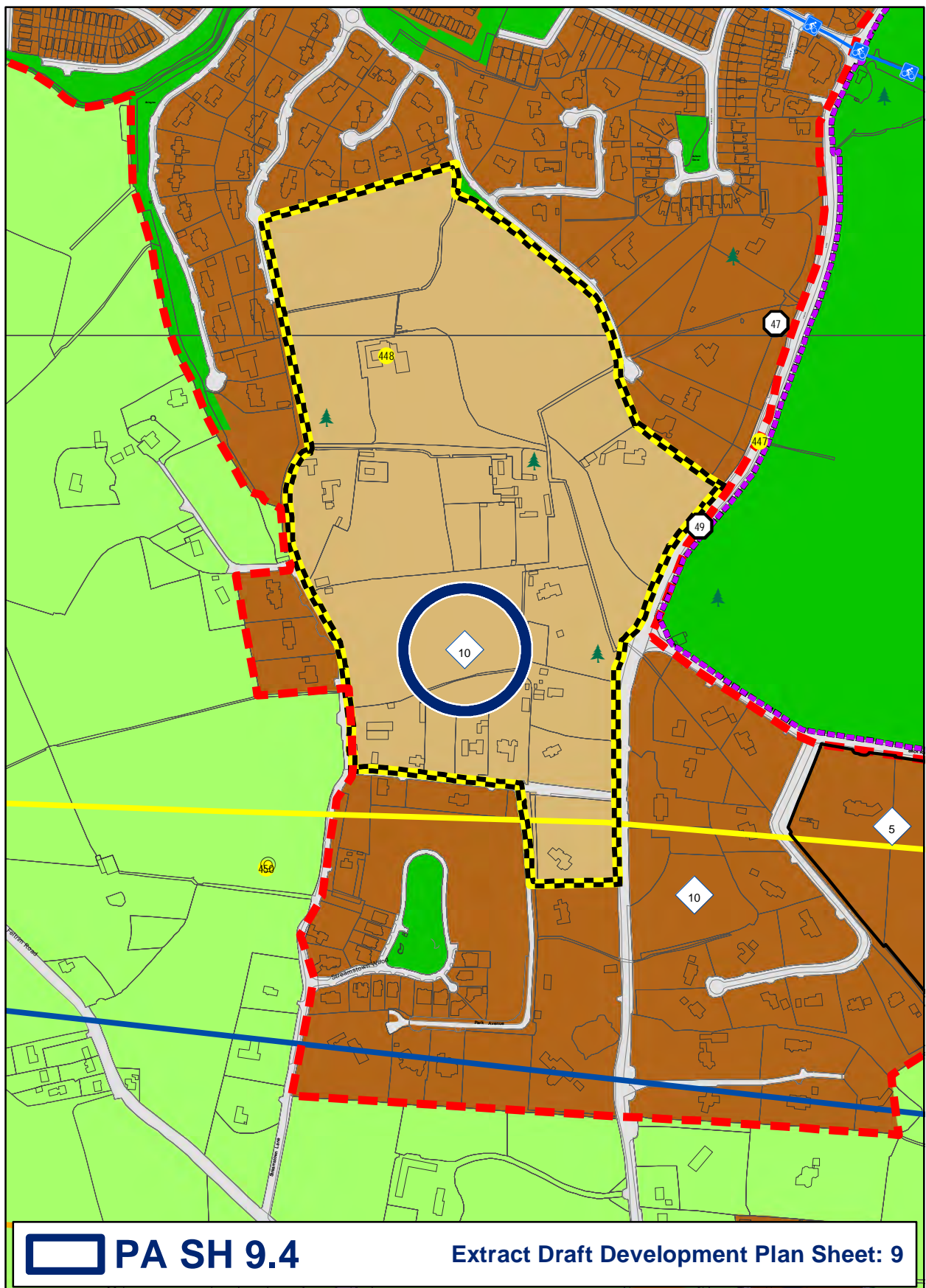
Amend zoning from Objective GB 'Greenbelt' to Objective CI 'Community Infrastructure' and insert new mapped Local Objective at Swords Road: Provide sheltered accommodation to cater for senior citizens

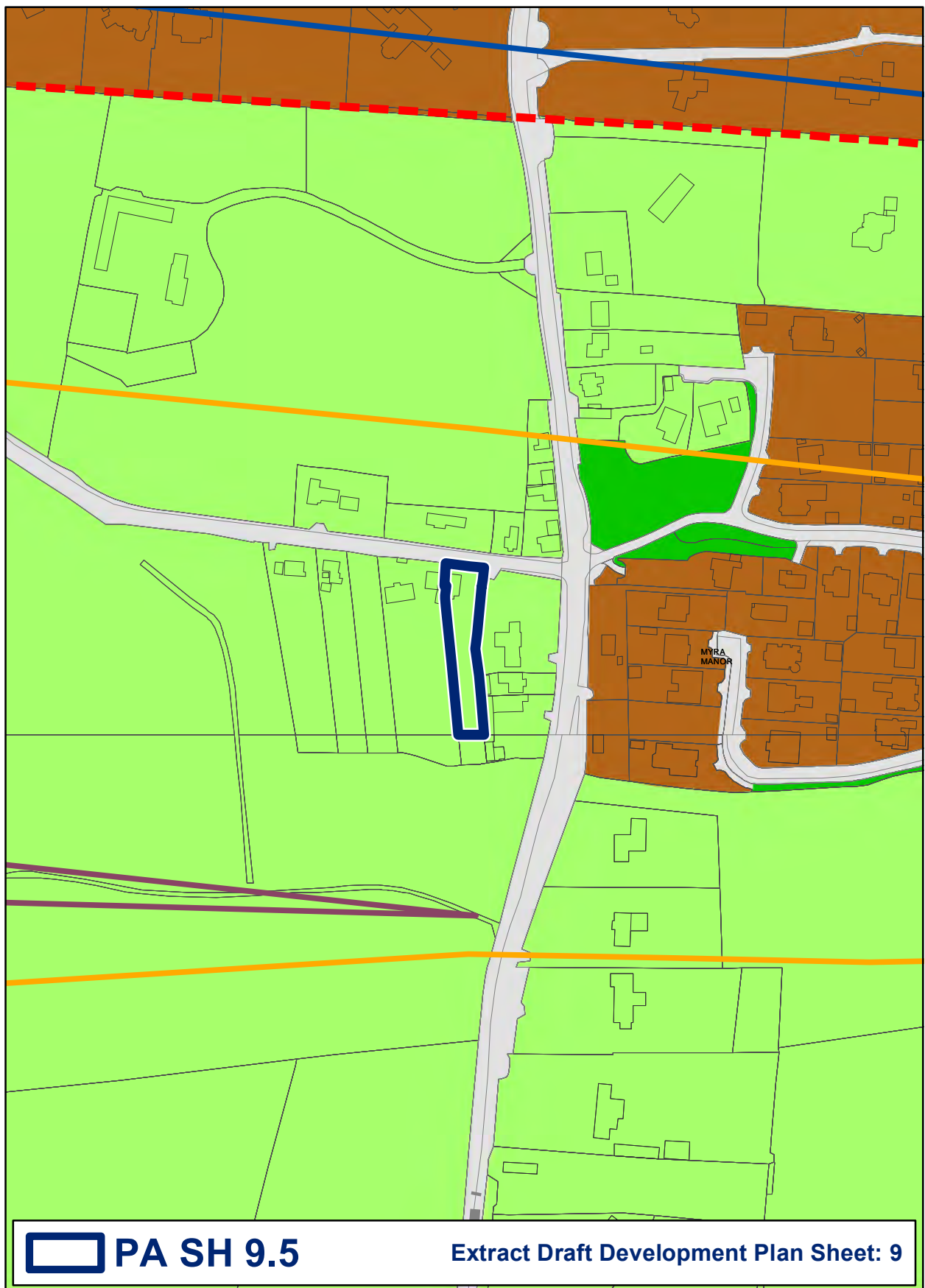


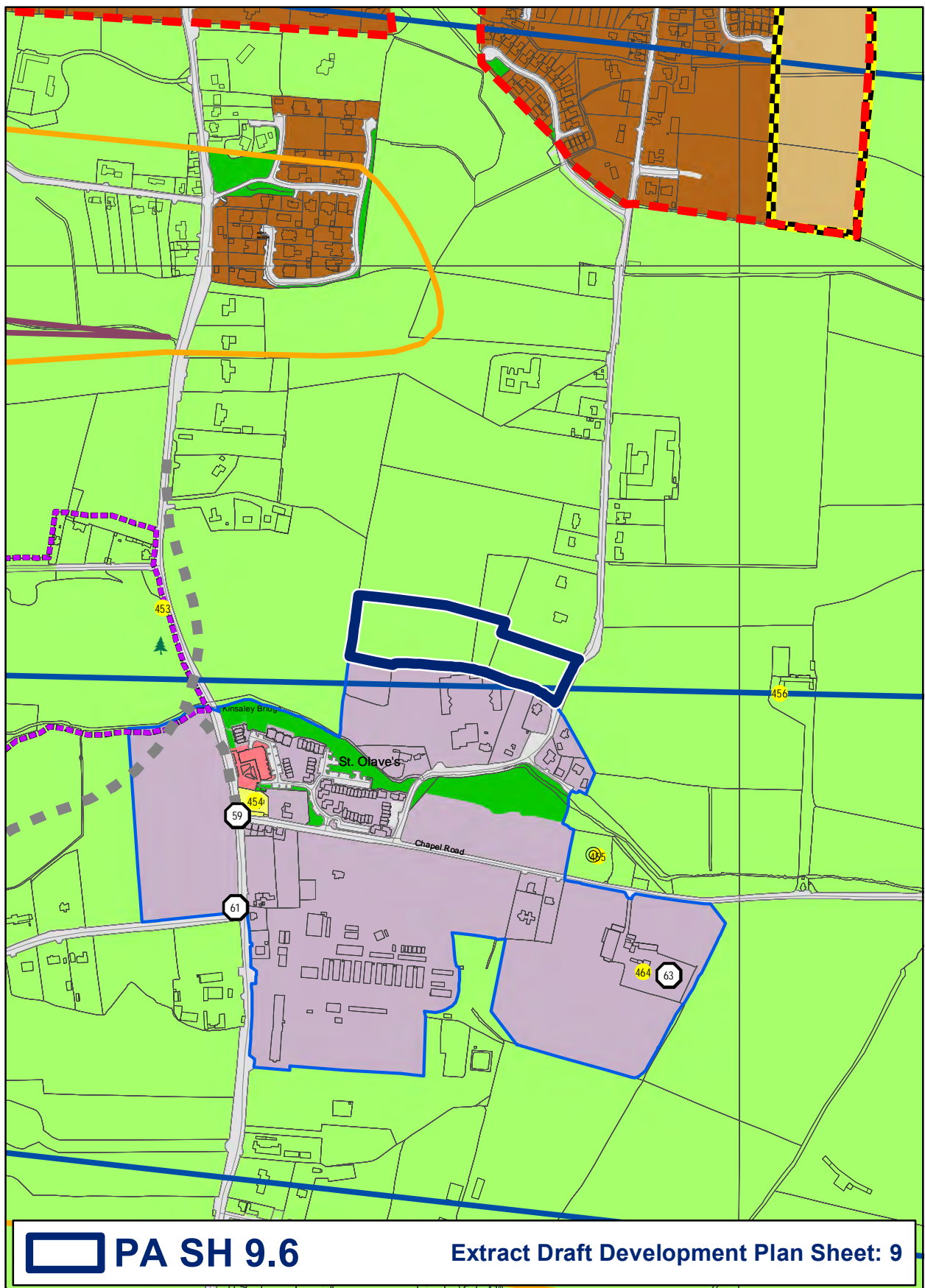
Amend zoning from Objective HA 'High Amenity' to Objective RS 'Residential' at Robswall Cottages Include Local Objective: To permit the completion, before December 2018, 2(no.) residential units associated with planning permission reference number F08A 1407, only

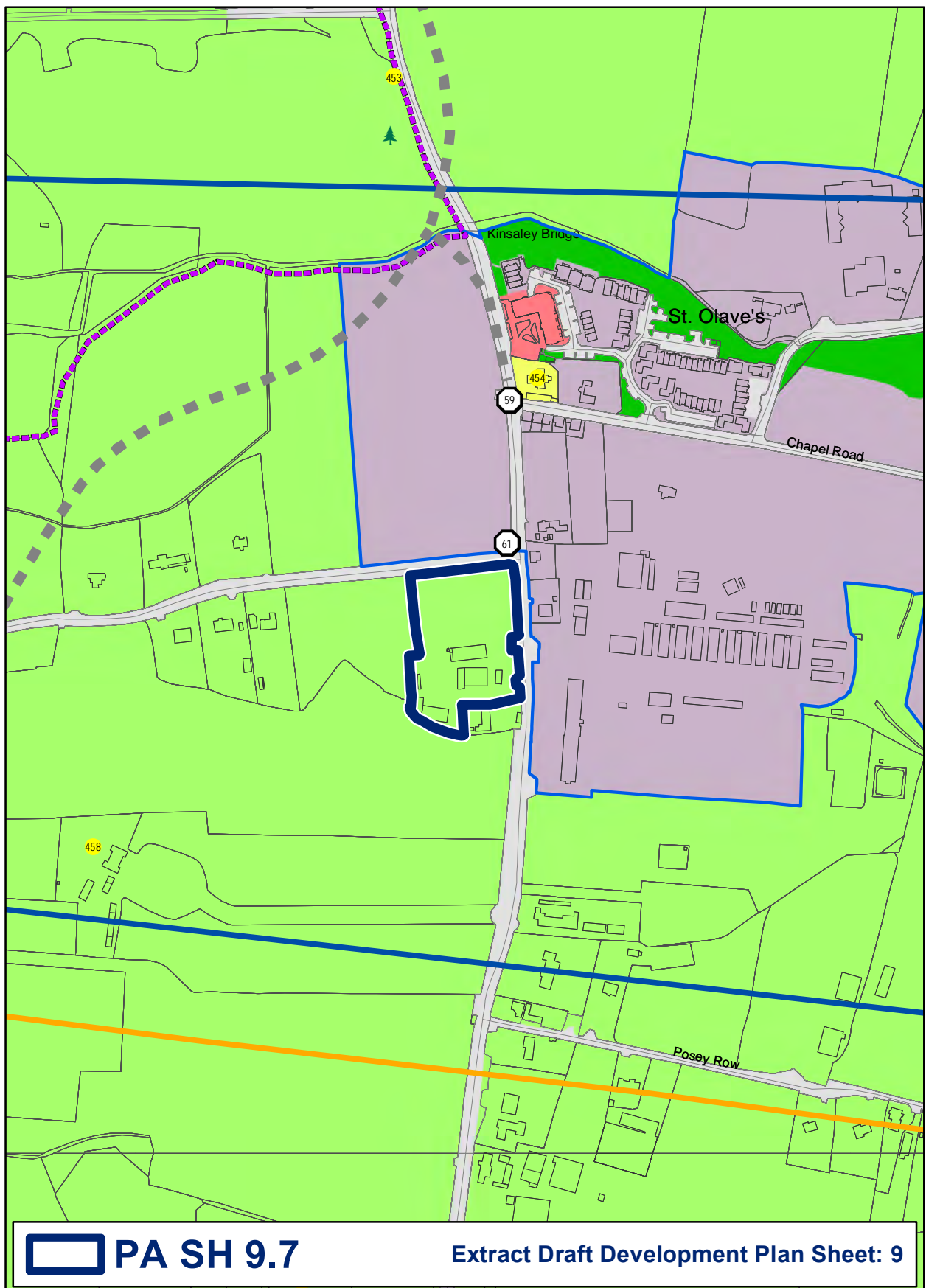


Amend wording of Local Objective 49 to read as: New or widened entrances onto the Dublin Road between Streamstown lane and the Swords Junction will be restricted, to ensure the protection of the mature tree-lined approach along the Dublin Road to Malahide

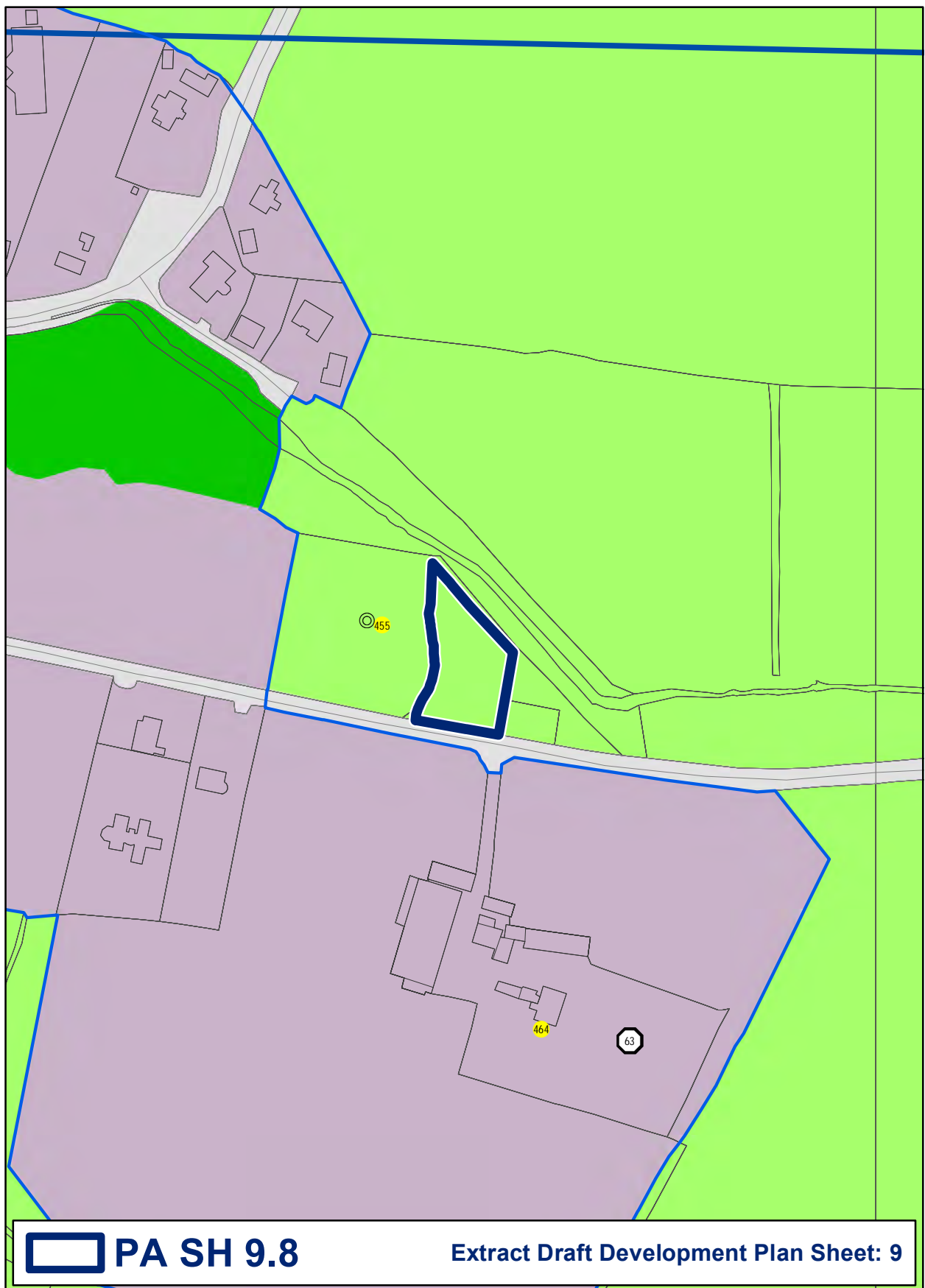




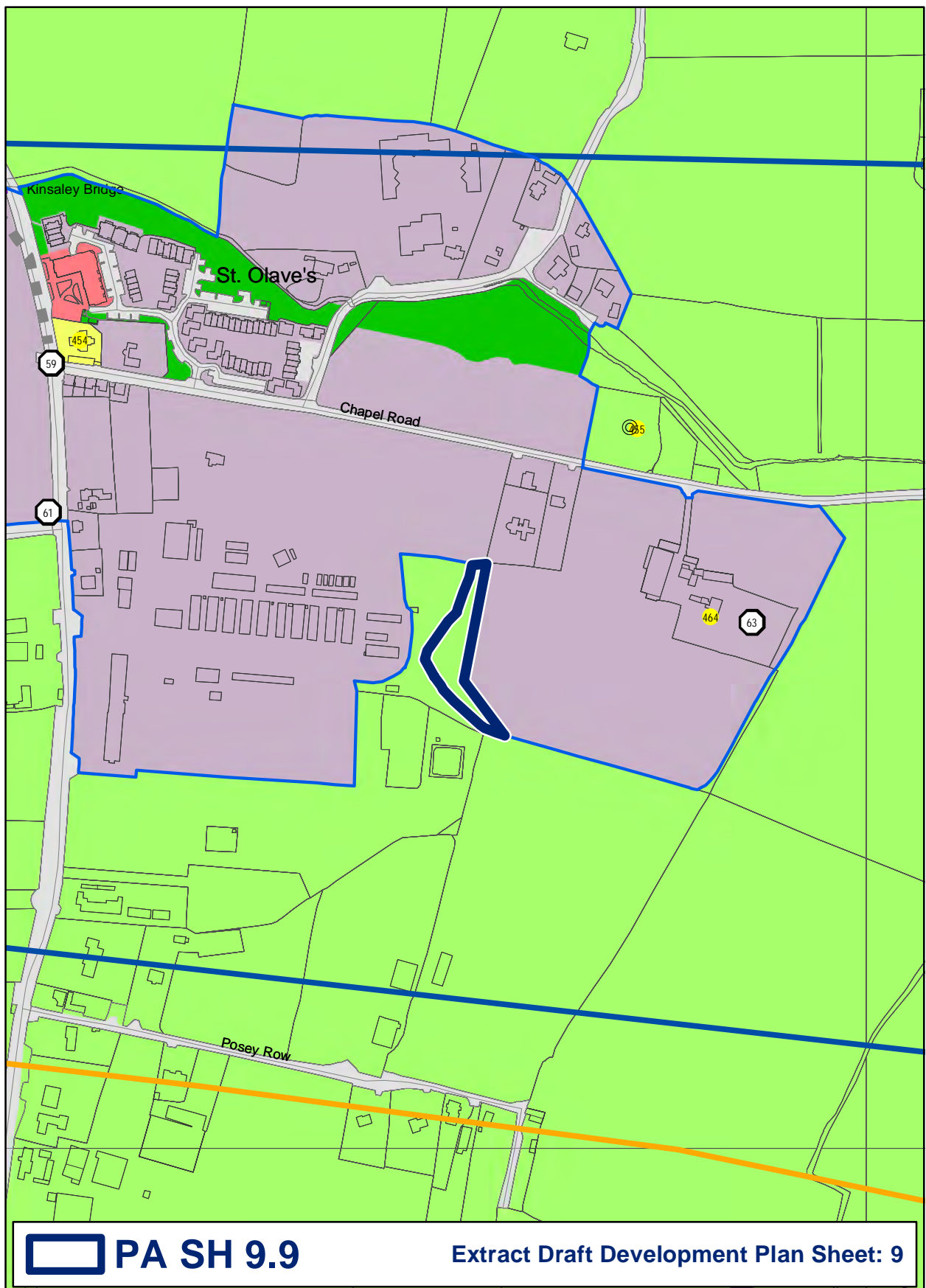




Amend zoning from Objective GB 'Greenbelt' to Objective RV 'Rural Village' at Kinsealy Garden Centre

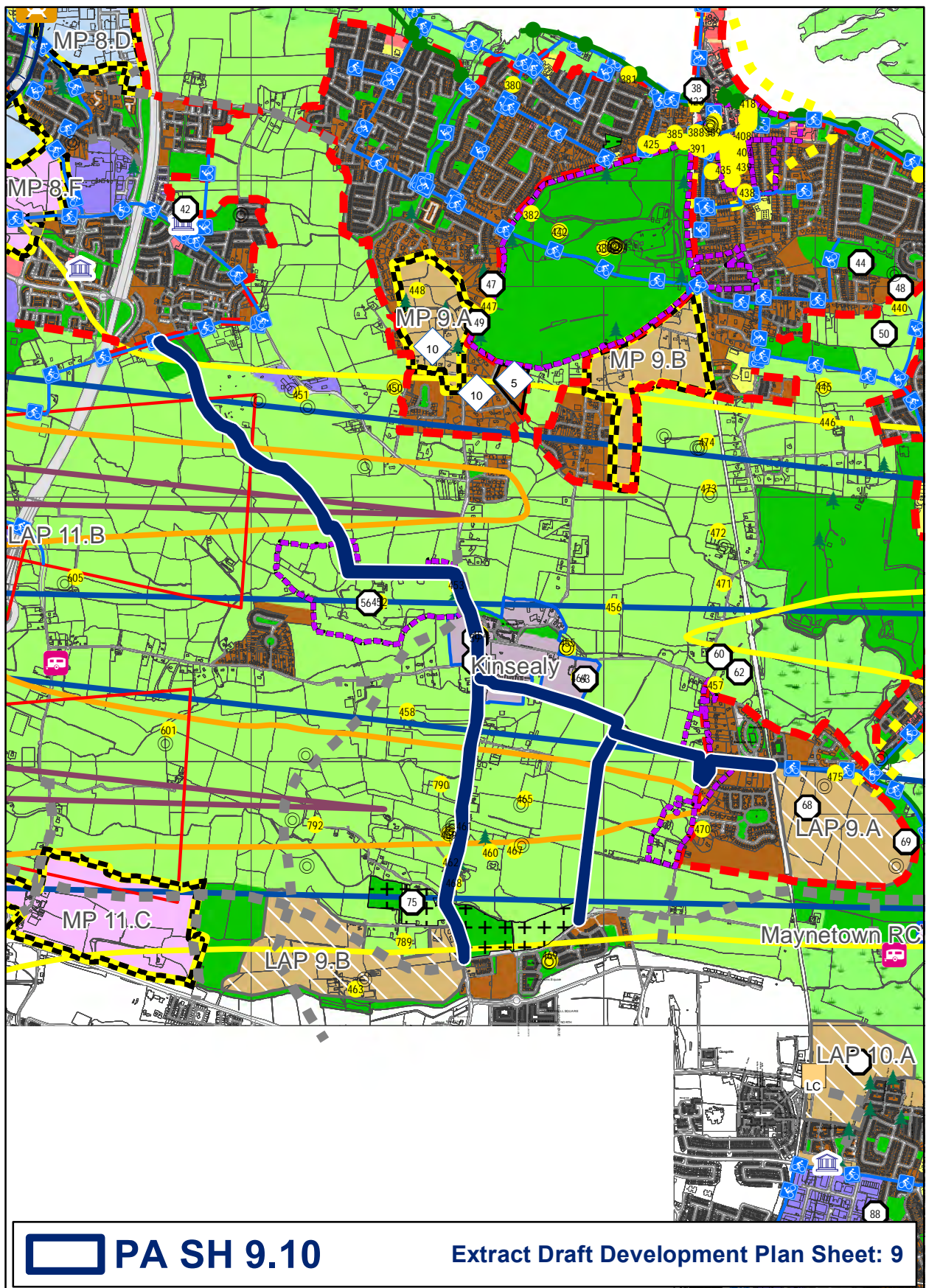


Amend zoning from Objective GB 'Greenbelt' to Objective RV 'Rural Village' at Kinsealy



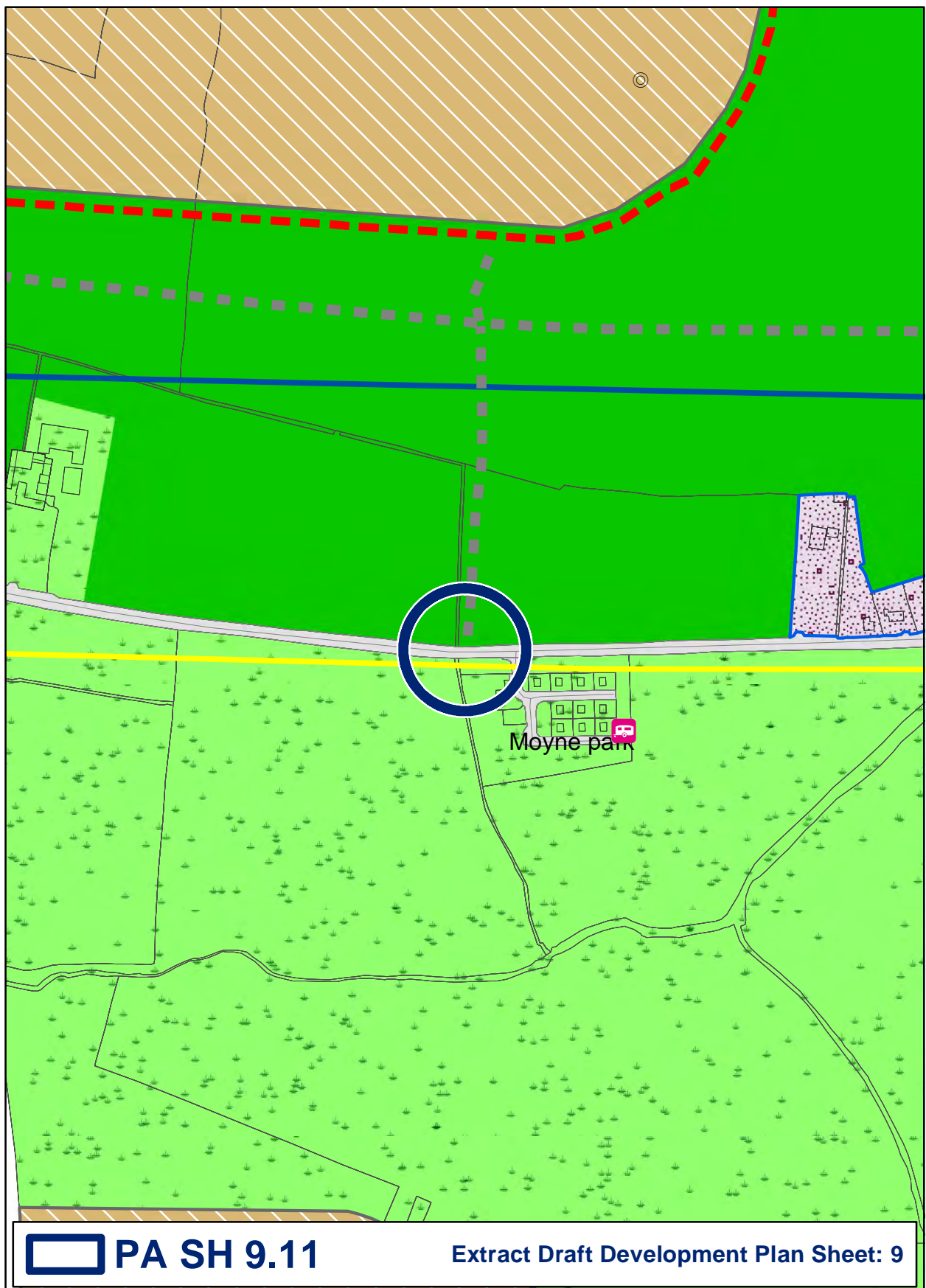
0 37.5 75 150 225 300 375 450 525 600 Meters

Amend Kinsealy House RV boundary to correlate with established boundary at this location

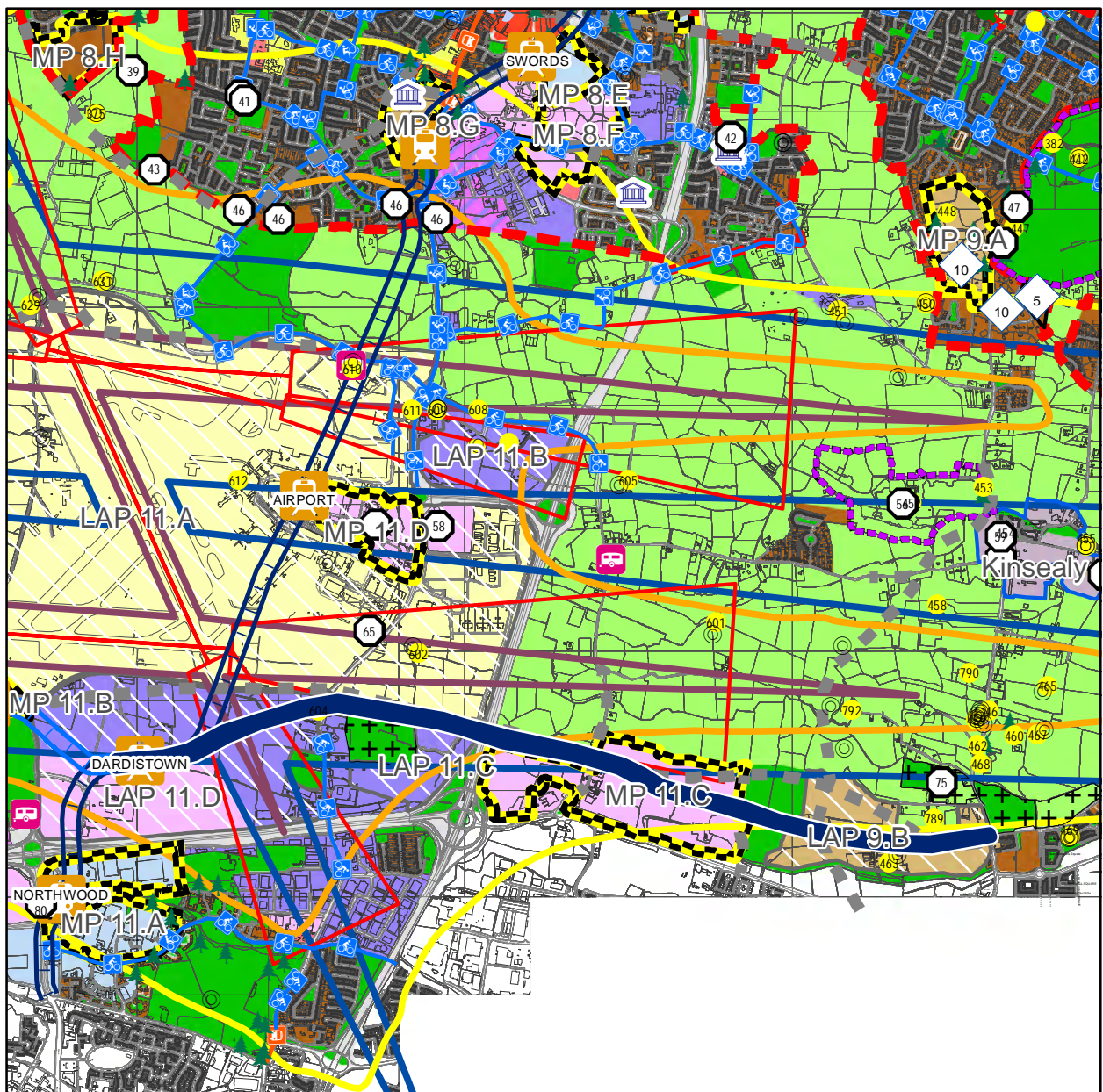


0 255 510 1,020 1,530 2,040 2,550 3,060 3,570 4,080 Meters

Add indicative cycle/pedestrian route as shown on the attached map – Abbeville to Kettle's Lane, Old Portmarnock to Teagasc Kinsealy, Balgriffin to Teagasc Kinsealy, Balgriffin to Kinsealy



Insert new Local Objective at Moyne Road: This road improvement route is not fixed or indicative. It could be along existing Moyne Road alignment or another alignment

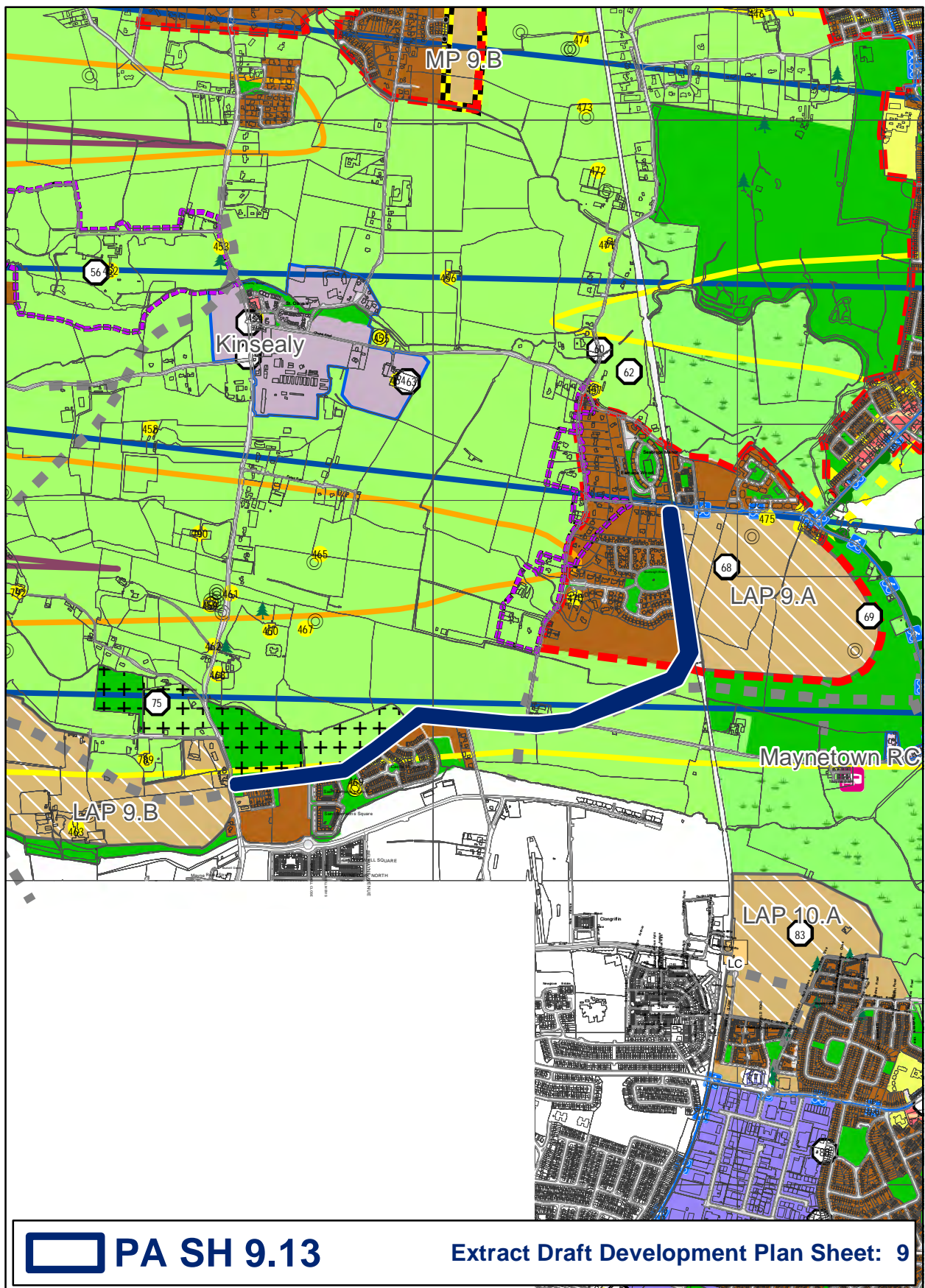


PA SH 9.12

Extract Draft Development Plan Sheet: 9

0 325 650 1,300 1,950 2,600 3,250 3,900 4,550 5,200 Meters

Add public transport reservation – Light Rail Corridor to Balgriffin (with intended connection to Clongriffin or Dart Line)



PA SH 9.13

Extract Draft Development Plan Sheet: 9

0 175 350 700 1,050 1,400 1,750 2,100 2,450 2,800 Meters

Add public transport reservation Balgriffin to Portmarnock