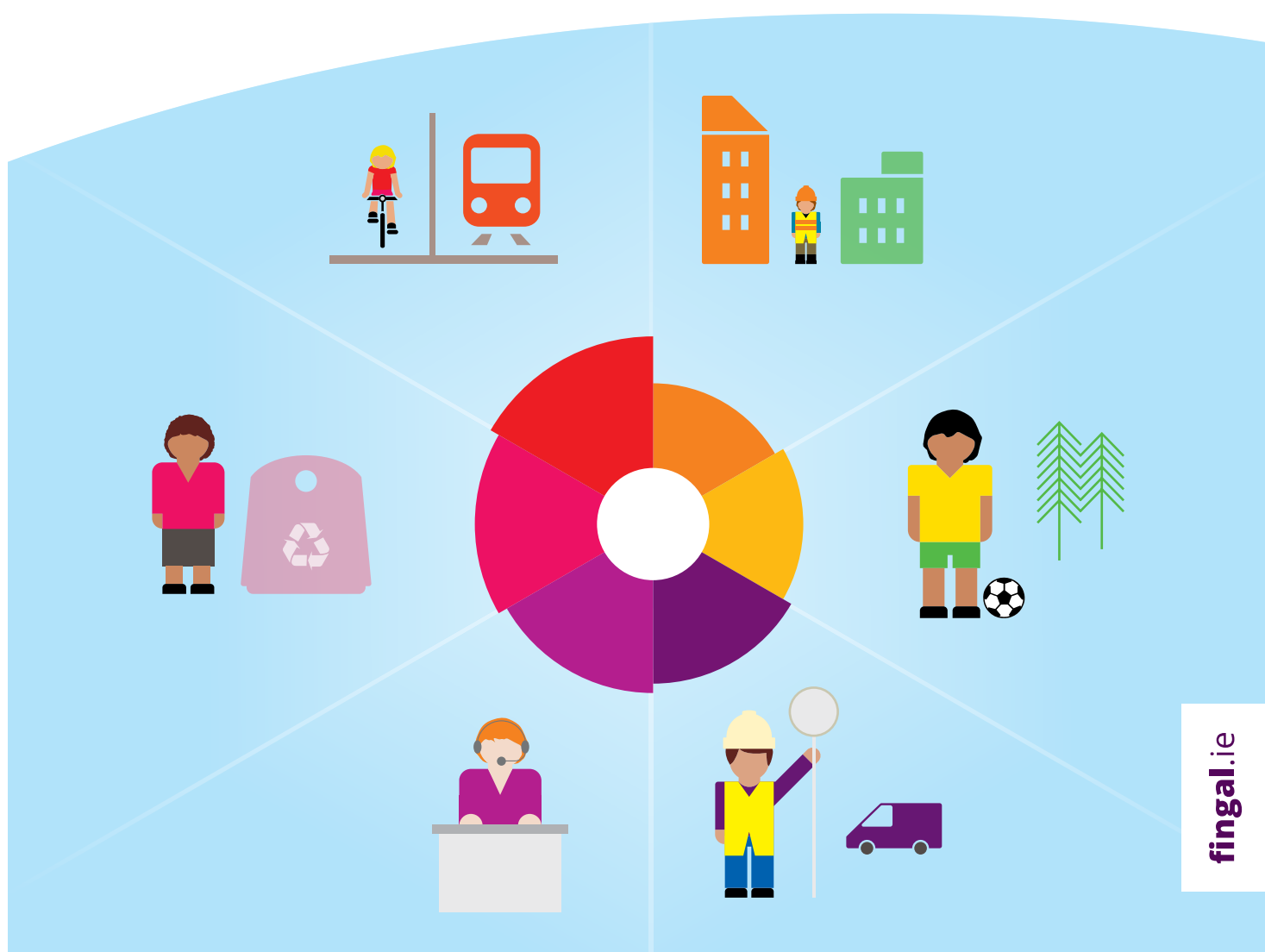




Your Council Your Services

2016

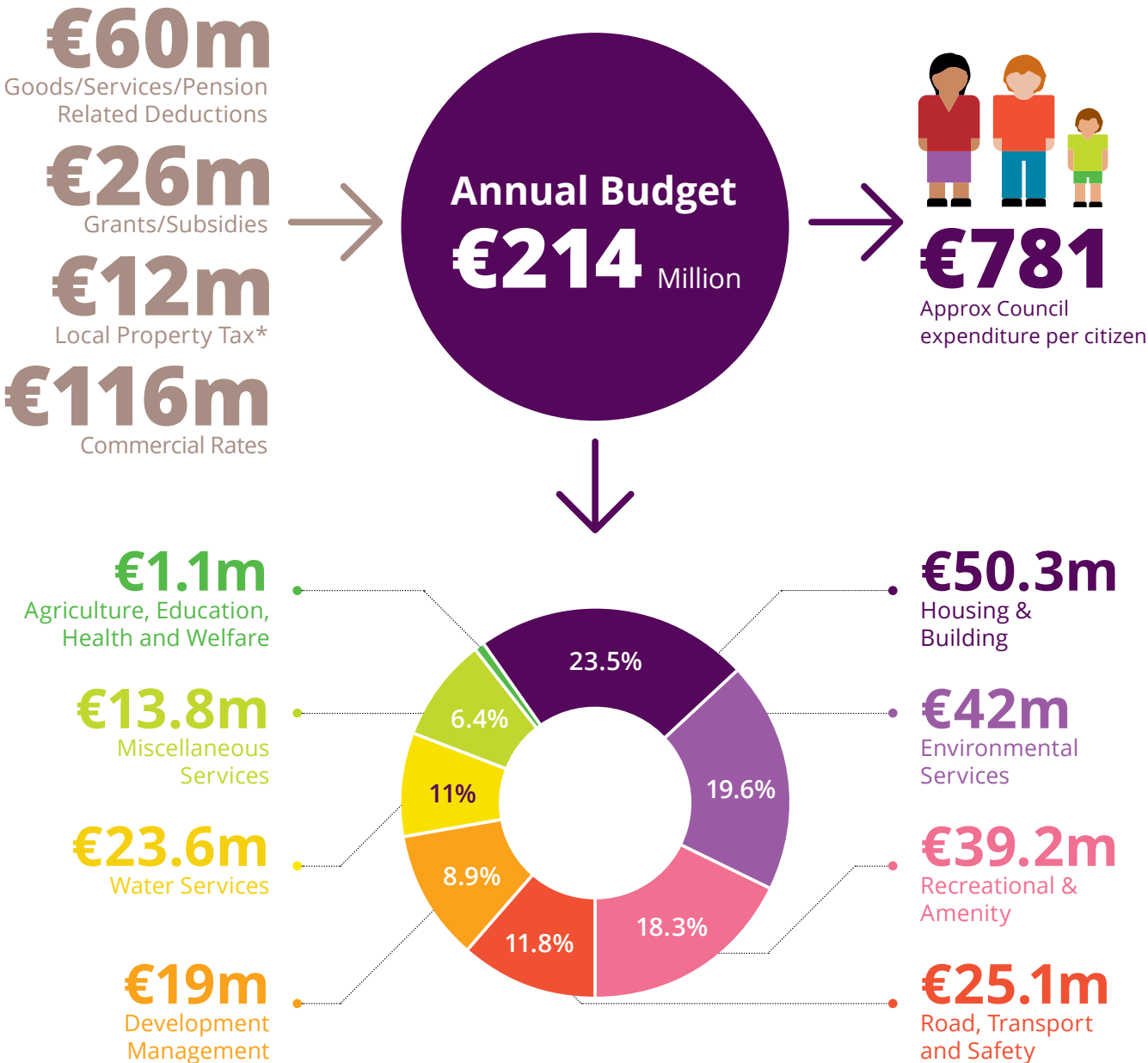


Take a look at what Fingal County Council is doing for you

We've put together some figures in this handy leaflet to show you just some of the work we do and how we're making Fingal a better place to live, work and visit. We're constantly striving to improve Fingal and have many great plans ahead for the County. Our aim is to put Fingal firmly on the map as a destination of choice as we are extremely proud of the County and hope you are too.

Contact us
Customer Care Team
By email: customercareunit@fingal.ie
By phone: **01 890 5000**

Annual Budget



* The Local Property Tax is €25.5m, of which €12m goes into the Annual Budget, and €13.5m of which goes towards the total Capital Expenditure Budget of €76m.

Housing for all



€81m

Has been made **available** to Fingal to meet its target of **1,376 social units**



€10.6m

Provided to **maintain** our **Housing Stock of homes**



Contribution to Homeless Organisations in 2016 including admin



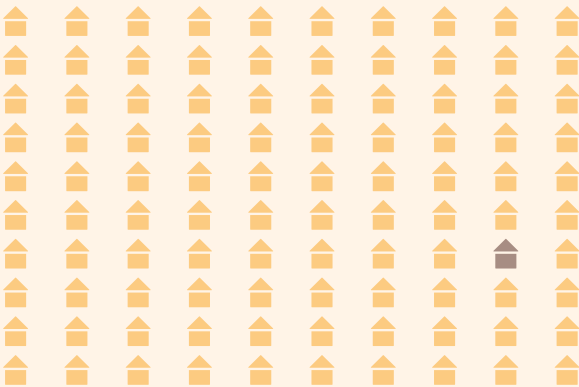
€2.15m

Housing Adaptation Grants for Older People & People with Disabilities

4,700
Homes managed and maintained



200
Number of homes in the **Window and Door Replacement Programme** in 2016



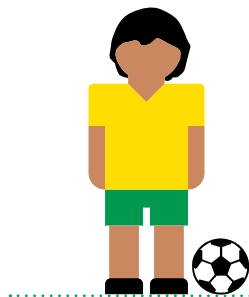
10,700
Number of **maintenance requests** expected



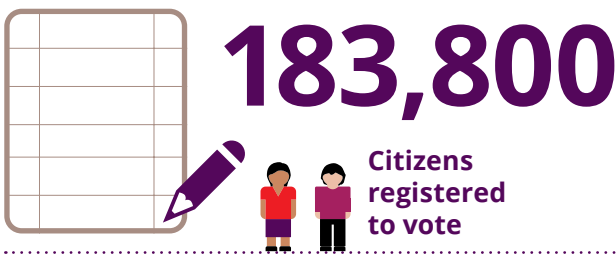
500
No. of homes that will have **preventative maintenance work** in 2016

Only **1%** of Council homes will be **unoccupied** at any time during 2016

Health & Wellbeing



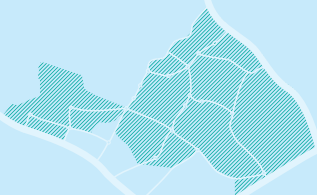
Citizen Engagement



Enterprise & Jobs



Dublin
Enterprise
Zone



17,000

Jobs supported in the
Dublin Enterprise Zone



€600k

Invested in strategic infrastructure
in the Dublin Enterprise Zone in 2015

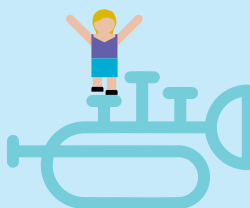


140,000

People
visited
Fingal's
heritage
properties
last year

60

No. of cultural and recreational
events that we supported



Jobs to be generated over the
lifetime of LEADER 2016-2020

2015 Fingal LEO key jobs and enterprise success stats

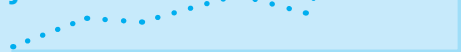


Oifig Fiontair Áitiúil
Local Enterprise Office

New Jobs and Project Grants

149

Jobs created



39 projects received
grant assistance

Creating an Enterprise Culture

31

Schools in the
largest Nationwide
Student Enterprise
Awards programme
with 2597 students



1050

Business Advice and
Mentoring Sessions

Enterprise Week

30

Events

1650

Participants



649

Course/Workshop
participants



311

Enterprise
Initiatives



Beautiful Fingal

'The Forest of Fingal' A Tree Strategy for Fingal

70,000

Street trees and trees in public open spaces



1000

Acres (400 hectares) of woodland & urban forestry in our parks and open spaces



135

Number of schools registered for the Green Schools Programme



1300+

Number of litter bins serviced daily

13

Number of Tidy Towns Committees



70

Number of Bring Banks



€4,079,300

Total cost of Road Cleaning, Litter Picking and Gully Cleaning



2

Number of Recycling Centres



36

Number of Burial Grounds maintained

850

Attendees at the Annual Road Safety Roadshow for Secondary Schools



Infrastructure schemes planned for 2016

2000

Hectares of public parkland and open spaces



Completion of Castle Mill Road, Balbriggan scheduled for end 2016



Provision of new pedestrian bridge due to be in place at Back Road, Malahide by end 2016

Community

Fingal Festivals & Events include the following visitor numbers:

100,000

Community St Patrick's Day Parades

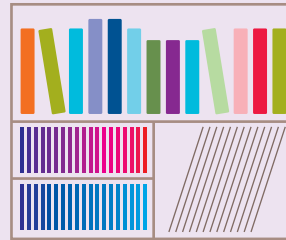
55,000

Flavours of Fingal

10,000 Cricket International

12,000 Dublin 15 Free Family Fun Days

82,000 Fingal Festivals



1m+

Books, CDs, pictures, DVDs are issued by libraries in Fingal



67%

of the population of Fingal are registered library members

Community Development:

Activity Funding:

118 Community Groups received funding

Community Facilities:

€690,000 invested in supporting new and existing community facilities

55,000 is the average footfall in community facilities

Community Events:

€63,000 was spent on Community Events

14

Public and mobile libraries



1.15m

Number of visitors to libraries



3000+

Number of library events

40.5

Average library opening hours per week

Planning for your future

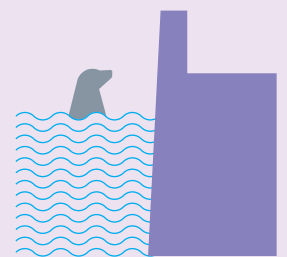
€3.9m

Will be spent on projects including refurbishment of **Skerries Library**, **Per Cent Art Project** and **Integrated School & Community Facilities** in 2016



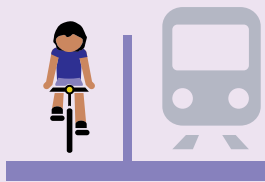
€7.9m

Will be spent on operational projects including: **beaches**, **graveyards**, **coastal protection**, **harbour refurbishment**, and to develop **parklands and recreational areas**



€4.2m

Will be spent on Planning & Strategic Infrastructure including: **Donabate Rd**, **Castle Mills Access Rd**, **Broadmeadow Estuary Pedestrian Cycleway**, **Snugborough Interchange**, **Shackleton Gardens**, **Hole in the Wall Road** & **Kilshane Cross**



€6.1m

Will be spent on Economic Enterprise and Tourism Development including **Swords Civic & Cultural Centre** and **upgrade of Newbridge Demesne Visitors Centre** in 2016



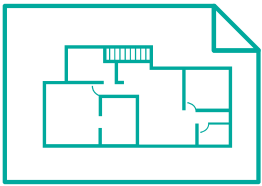
€1.6m

Will be spent on **drainage & remediation works** in 2016

Regulating our Environment

1066

Planning applications were received in 2015



3913

Number of environmental inspections



55

Number of dangerous buildings inspections



50

Number of derelict site inspections

Pollution Incidents

136

Number of noise pollution complaints



52

Number of water pollution incidents

124

Number of air pollution complaints

Your Safety

€18.9m

Contribution to Dublin City Council Fire Service



32,000

Number of public lights maintained



250

Number of sets of traffic lights



2500

No. of school children participating in cycle safety training



€14.5m

Amount that will be spent on Regional and Local Road Maintenance and Improvement

21

Number of traffic monitoring CCTV cameras

92

Number of permanent school wardens employed and 27 reserves

171

Number of graffiti inspections/ interventions