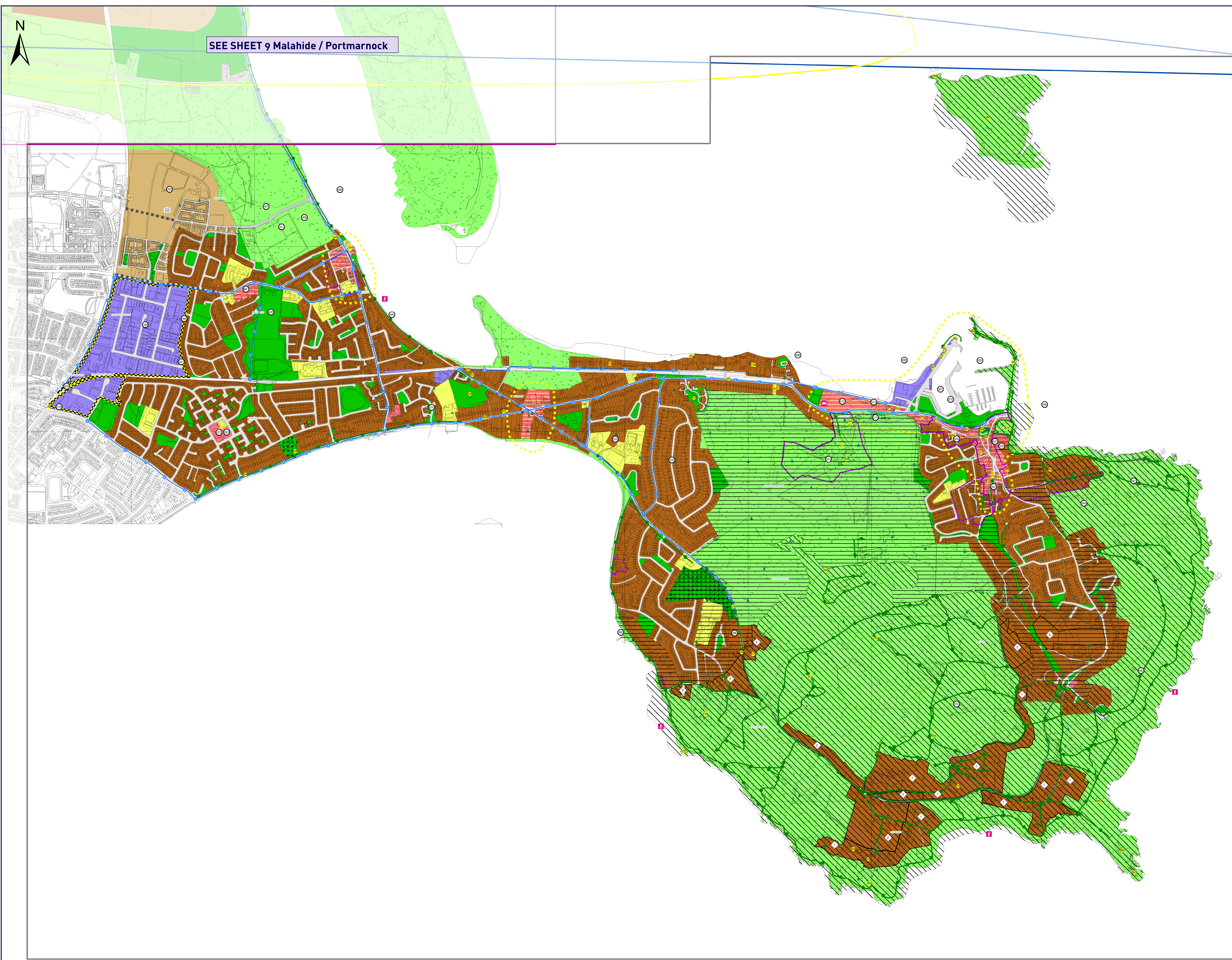


SEE SHEET 9 Malahide / Portmarnock



Fingal Development Plan 2011 - 2017

BALDOYLE/HOWTH

Sheet No.10

Zoning Objectives

- Objective CI Provide for and protect civic, religious, community, education, health care and social infrastructure
- Objective GE Provide opportunities for general enterprise and employment
- Objective HA Protect and enhance high amenity areas
- Objective LC Protect, provide for and/or improve local centre facilities
- Objective OS Preserve and provide for open space and recreational amenities
- Objective RA Provide for new residential communities in accordance with approved local area plans and subject to the provision of the necessary social and physical infrastructure
- Objective RS Provide for residential development and protect and improve residential amenity
- Objective TC Protect and enhance the special physical and social character of town and district centres and provide and/or improve urban facilities

Specific Objectives

- Housing Density Boundary
- Protect and/or provide for a Burial Ground
- Howth SAA Buffer Zone
- Howth SAOZ
- Architectural Conservation Area
- Masterplan Area
- Indicative Cycle/Pedestrian Route
- Road Proposal
- Preserve Views
- Urban Centre Strategy/Study Area
- Outer Airport Noise Zone
- Outer Public Safety Zone
- Car Park
- Coastal walk
- Proposed School
- Provide for residential development at a density per hectare as shown
- Provide for Traveller Accommodation
- Protect & preserve trees, woodlands and hedgerows
- Protected Structure
- Recorded Monument
- Provide for a Local Centre
- Local Objective

Note:
For further detail please refer to the Written Statement and/or Appendices and the Green Infrastructure Maps

